

低压高分断熔断器式隔离开关

NH fuse-switch-disconnectors



低压高分断熔断器式隔离开关可在建筑用电、开关柜、控制柜及公用电网中应用。隔离开关中的触头与熔断体触刀的系统，能确保开关分合闸的操作安全。

NH fuse-switch disconnectors are used in building installations, switchgear and controlgear as well as in power utility networks. The contact system enables safe load break operation using the fuse-links as moving contacts.

开关本体在合闸位置可防止手指意外碰触，在分闸位置可以提供安全可见的绝缘距离。各种底板安装，DIN导轨或母线安装，能适用于各种应用场合。

The product is safe against finger-touch in closed position and provides a safe and visible isolating distance in open position. Different versions for baseplate mounting, DIN rail or busbar mounting are available to fit a variety of applications.



注意：本样本的相关产品依据3C证书做过调整，适合中国市场销售。全系列产品资料，请参阅官网<https://www.jeanmueller.de>。

目录

Contents

低压高分断熔断器式隔离开关 KETO	T-1	<i>NH fuse-switch-disconnectors KETO</i>	<i>T-1</i>
产品简介	T-1	<i>Introduction</i>	<i>T-1</i>
爆炸图	T-3	<i>Explosion drawing</i>	<i>T-3</i>
KETO – 底板式安装	T-7	<i>KETO – baseplate mounting</i>	<i>T-7</i>
KETO – 母线系统安装	T-9	<i>KETO – busbar mounting</i>	<i>T-9</i>
附件	T-11	<i>Accessories</i>	<i>T-11</i>
技术参数	T-15	<i>Technical data</i>	<i>T-15</i>
产品尺寸	T-25	<i>Dimensions</i>	<i>T-25</i>
低压高分断熔断器式隔离开关 LTL	T-37	<i>NH fuse-switch-disconnectors LTL</i>	<i>T-37</i>
产品简介	T-37	<i>Introduction</i>	<i>T-37</i>
底板式安装	T-37	<i>Baseplate mounting</i>	<i>T-37</i>
附件	T-38	<i>Accessories</i>	<i>T-38</i>
技术参数	T-39	<i>Technical data</i>	<i>T-39</i>
产品尺寸	T-41	<i>Dimensions</i>	<i>T-41</i>

KETO – 一个系统，四个尺寸，全面安全

KETO – one system, four sizes, full safety

不同尺寸的KETO隔离开关都可以组合在一起，它可以通过防触电保护盖板来调整。

许多功能贯穿于所有结构尺寸中，例如：母线顶部以上32,60,70和90mm四种不同高度盖板。这确保了最佳的系统集成。底板安装，母线和DIN导轨安装为每种应用提供合适的解决方案。

KETO-disconnectors can be combined regardless of the size. Different dimensions are adjusted to an uniform cover cutout with the available components for touch protection.

Many functions are integrated across all construction sizes, e. g. four cover support levels at 32, 60, 70 and 90mm above top of busbar. This ensures an optimal system integration. Versions for baseplate mounting, busbar- and DIN rail mounting offer the suitable solution for each application.



KETO 尺寸 00

$I_e = 160A$
 总宽: 106mm
 总长: 195mm

KETO size 00

$I_e = 160A$
 Overall width: 106mm
 System size: 195mm

KETO 尺寸 1

$I_e = 250A$
 总宽: 184mm
 总长: 300mm

KETO size 1

$I_e = 250A$
 Overall width: 184mm
 System size: 300mm

KETO 尺寸 2

$I_e = 400A$
 总宽: 210mm
 总长: 300mm

KETO size 2

$I_e = 400A$
 Overall width: 210mm
 System size: 300mm

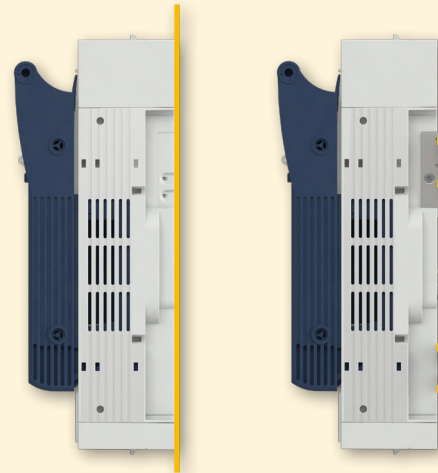


KETO 尺寸 3

$I_e = 630A$
总宽: 250mm
总长: 300mm

KETO size 3

$I_e = 630A$
Overall width: 250mm
System size: 300mm

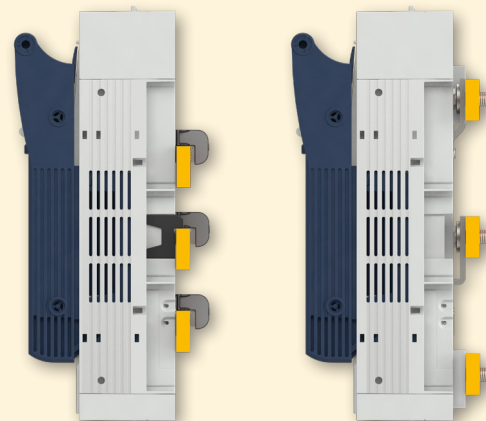


底板安装

多重安装孔模式，安装灵活，更换快捷。KETO-00和KETO-1可以选择构建在两个并行的DIN卡轨上。

Baseplate mounting

Multiple mounting hole pattern allow a variable installation and quick replacement. KETO-00 and KETO-1 can optionally be built on two parallel DIN-rails.



母线安装

KETO-00到KETO-3无需打孔就可易于安装在60mm的母线系统上。KETO-1到KETO-3也有安装在100mm母线系统产品。

Busbar mounting

KETO-00 to KETO-3 are easy to fit onto busbar systems with 60mm center distance – without any drilling. KETO-1 to KETO-3 are also available for installation onto 100mm busbar systems.

KETO – 为您的应用量身定做的系统

KETO – always the right system for your application

KETO-00的顶盖板和底部侧盖板

可兼顾60mm和70mm母线系统

Cover support for top and bottem side KETO-00

Variable mountable on 60mm- and 70mm-level

端子盖罩

可扩展, 可自定义的电缆入口

Terminal cover

Variable extendable, cable entry customizable

扩展端子盖板

用于母线系统上的触摸保护

Extension terminal cover

For touch-protection of the busbar system from above

重叠保护罩

用于 (KETO-00) 母线系统顶部的防触摸覆盖

Overlap protection

For touch-protected covering of the busbar system from top side at the device level (KETO-00)

侧盖板

有32mm, 60mm或70mm高度 (KETO-00)

Lateral cover support

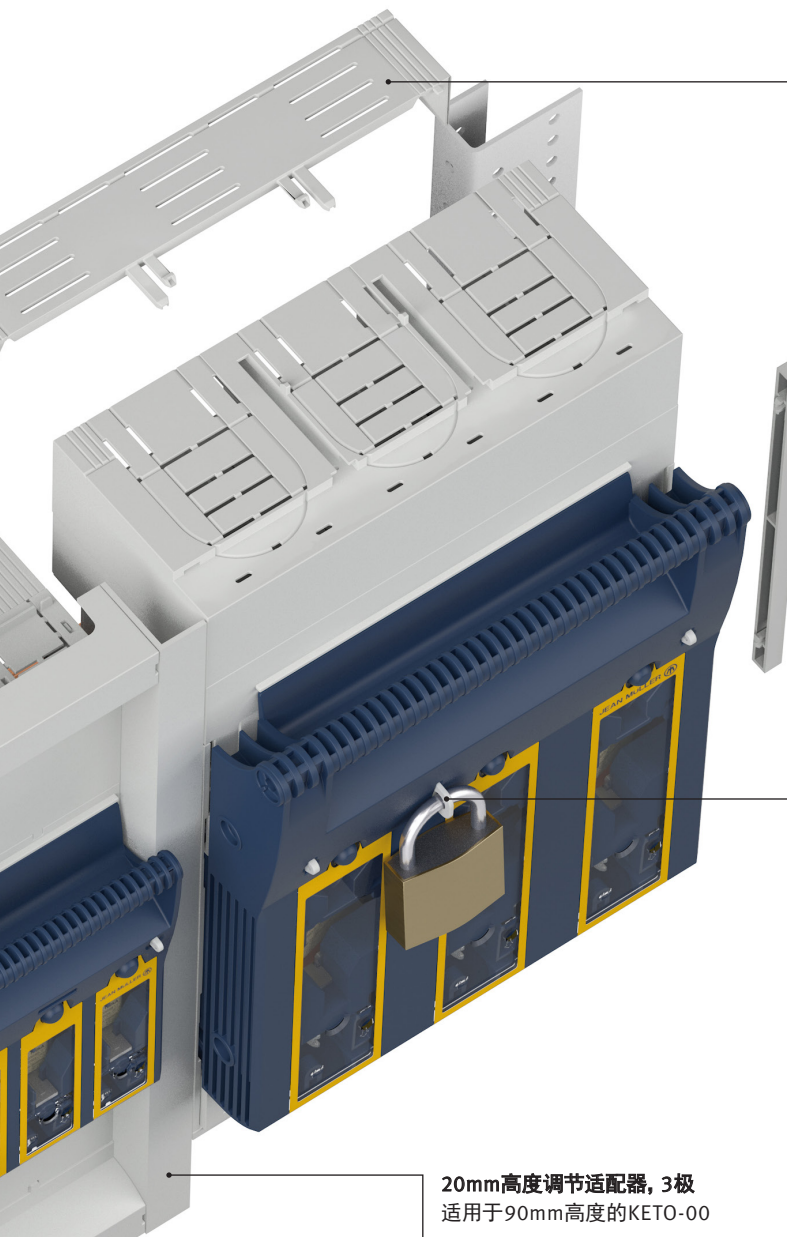
Variable mountable on 32mm-, 60mm- or 70mm-level (KETO-00)

接触盖互锁

联锁盖的联锁装置只能通过工具操作

Contact cover interlock

Interlock for contact covers which can only be operated by tool



重叠保护罩

用于 (KETO-1, -2, -3) 母线系统顶部的防触摸覆盖

Overlap protection

For touch-protected covering of the busbar system from top side at the device level (KETO-1, -2, -3)

侧盖板

KETO-00
有32mm, 60mm, 70mm或
90mm高度 (KETO-1, -2, -3)

Lateral cover support

KETO-00

Variable mountable on
32mm-, 60mm-, 70mm- or
90mm-level (KETO-1, -2, -3)

挂锁

可安装最大卡环直径为
6mm的一个挂锁

Locking device

For holding of one padlock
with max. 6mm shackle
diameter

20mm高度调节适配器, 3极
适用于90mm高度的KETO-00

**Height adjustment adapter
20mm, 3-pole**

For adaption of KETO-00 at
90mm installation level

开关位置状态指示

常开和常闭两种状
态, AC250V,
10/3A (感性/阻性)

Switch position indicator

2 changeover, AC250V,
10/3A (resistive/ind.)

关注用户安全

KETO的安全防护始终处于最
高水平。即使在欠压状态下
也能确保重叠保护罩, 状态
指示器, 易于使用的测量通
道等功能, 和随时可用的特
殊防触摸保护盖配合使用,
以最大限度地保证用户安
全。

Focus on user safety

At KETO is safety always at
the highest level. Even under
voltage ensure features like
overlap-protectors, status
indicators, easy to use
measuring access but also
special touch protection
covers at any time for
maximum user safety.

KETO – 最精细的解决方案

KETO – sophisticated solutions down to the smallest detail

不同环境对应的选项

根据安装情况，规格会有所不同，需要选择。各种类型的端子、四种不同的夹紧系统和许多进一步的设备选择-KETO提供适应所有安装条件的解决方案。

Options for all conditions

Depending on the installation situation the specifications vary, options are required. Various types of terminals, four different clamping systems and many further equipment options – KETO is the solution for all installation conditions.

熔断器监控ESlight

故障指示 –
每相一个红色LED

Fuse-monitoring ESlight

Selective fault indication –
one red LED per phase

端子盖罩

可扩展，可自定义的电缆入口

Terminal cover

Variable extendable, cable entry customizable

电力防盗保护

锁定的视窗用于防篡改

Power theft protection

For tamper-proof locking of the windows

三相相母线

触摸保护电源出线系统最多可适合5个 KETO-00的安装

Phase busbar 3-phase

Touch-protected feeding system for up to five KETO-00

馈线接线夹

KETO-00的触摸保护出线端子夹 25-95mm²，端子M8

Feeding clamp

Touch-protected feeding clamps 25-95mm² for KETO-00, terminal M8

电子熔断器监控单元 (ES10)

AC400V~500V的全方位解决方案，带待机指示、对于熔断体的故障模拟和熔断器故障选择指示

Electronic fuse-monitoring unit (ES10)

The allround-solution for AC400-500V, with stand-by indicator, fault simulation and selective fault indicator for fuse failure

导轨固定套件
适用于KETO-00和KETO-1，
根据EN 50022在DIN导轨上
安装

DIN-rail fixing kit
For KETO-00 and KETO-1,
for installation on DIN-rails
according to EN 50022

密封装置
所有尺寸的产品都具有
Sealing equipment
At all sizes integrated
in standard device

框型接线夹
Frame clamp

菱型接线夹
Prism clamp

双菱型接线夹
Prism clamp for two conductors

铜型接线夹
Clip terminal

机械式熔断器状态指示
与带撞击器的NH熔断体配合使用

Mechanical fuse-monitoring unit
For NH-fuse-links with striker

机电式熔断器状态指示 (AM)
带指示器的电机保护开关，
特殊应用于AC/DC 220~690V

Electromechanical fuse-monitoring unit (AM)
Monitoring with motor-protection switch for
special applications AC/DC220-690V

“F” 接线端子可以改装成其
他连接方式，并且可以在附件
部分从T-11找到

*The terminal clamps
can be retrofitted for
connection type “F”
and can be found in the
accessories section starting
from page T-11.*

低压高分断熔断器式隔离开关 KETO

NH fuse-switch-disconnectors KETO

低压高分断熔断器式隔离开关，底板式安装

NH fuse-switch-disconnectors for baseplate mounting

产品优势

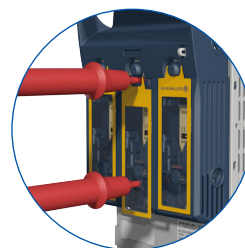
Convincing advantages

便于测量电压

- 通过手柄中的可移动窗口，使用标准电压测试仪可方便测量
- 在标准操作条件下不降低防护等级IP2XC

Easy voltage measurement

- Comfortable access with standard voltage testers via movable window in the handle
- No reduction of protection degree IP2XC in standard operating condition

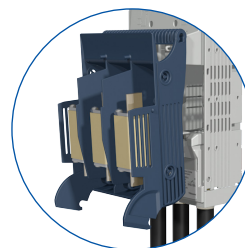


节省空间

- 通过集成悬挂装置安全地挂靠在开关本体上
- 可靠的防止意外重合闸

Space-saving parking position

- Safe parking of the handle by integrated hanging device
- Reliable protection against accidental reclosing



DIN导轨安装

- 用于KETO-00和KETO-1的导轨安装的改装，可以节省安装时间
- 双轨安装技术，可靠性强

DIN rail mounting

- Time-saving installation due to retrofit rail mounting for KETO-00 and KETO-1
- Strong grip by two-rail mounting technology



防止错误操作

- 锁定装置可防止未经授权的操作
- 可以适合各种尺寸

Protection against operating errors

- Locking device prevents unauthorized operation
- Can be retrofitted in all sizes



3极 > 底板式安装

3-pole design > Baseplate mounting



尺码 Size	端子类型 Terminal version	线径 Connection [mm ²]	电流 [A]	包装 PU	型号描述 Description	订货号 Article-No.
00	扁平端子 M8/2xM5 Flat terminal M8/2xM5	max. 95	160	1	KETO-00-3/F	T500113000
1	扁平端子 M10 / Flat terminal M10	max. 150	250		KETO-1-3/F	T100113000
2	扁平端子 M10 / Flat terminal M10	max. 240	400		KETO-2-3/F	T200113000
3	扁平端子 M10 / Flat terminal M10	max. 300	630		KETO-3-3/F	T300113000

单极 > 底板式安装

1-pole design > Baseplate mounting



尺寸 Size	端子类型 Terminal version	线径 Connection [mm ²]	电流 [A]	包装 PU	型号描述 Description	订货号 Article-No.
00	扁平端子 M8/2xM5 Flat terminal M8/2xM5	max. 95	160	2	KETO-00-1/F	T500111000
1	扁平端子 M10 / Flat terminal M10	max. 150	250		KETO-1-1/F	T100111000
2-3	扁平端子 M10 / Flat terminal M10	max. 300	400/630		KETO-3-1/F	T300111000

4极 > 底板式安装

4-pole design > Baseplate mounting



尺寸 Size	端子类型 Terminal version	线径 Connection [mm ²]	电流 [A]	包装 PU	型号描述 Description	订货号 Article-No.
00	扁平端子 M8/2xM5 Flat terminal M8/2xM5	max. 95	160	1	KETO-00-4/F	T500114000
1	扁平端子 M10 / Flat terminal M10	max. 150	250		KETO-1-4/F	T100114000
2-3	扁平端子 M10 / Flat terminal M10	max. 300	400/630		KETO-3-4/F	T300114000

第四极, 先闭合, 后断开 / 4th pole advanced making, delayed breaking

附件 / Accessories	技术参数 / Technical data	尺寸 / Dimensions
页码 / Page: T-11ff.	页码 / Page: T-15ff.	页码 / Page: T-25ff.

低压高分断熔断器式隔离开关 KETO

NH fuse-switch-disconnectors KETO

低压高分断熔断器式隔离开关，母线安装

NH fuse-switch-disconnectors for busbar mounting

产品优势

Convincing advantages

兼容性

- 所有尺寸可保持高度一致
- 通过四种支撑盖板达到32mm, 60mm, 70mm, 90mm安装高度

Compatibility

- Uniform cover cutout for all sizes
- Variable installation depth by 4 field supporting surfaces (32mm, 60mm, 70mm, 90mm)

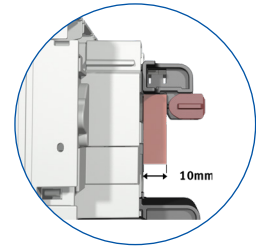


灵活性

- 可适应5mm和10mm厚的母排
- 可选择上进线或下进线

Flexibility

- Reversible adaptation to 5mm and 10mm thick bars
- Easy changing of cable terminal from bottom side to top side

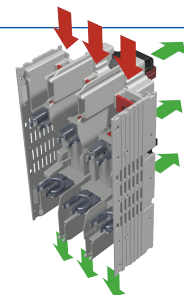


节省空间

- 通过特殊设计与集成馈电端子可以实现母排系统和电缆进出线在一个开关上
- 母线支架覆盖范围广，最大宽度为20mm，最大高度为19mm

Space-saving

- Busbar supply and safe outgoing cable outlet in one device through a special design with integrated feeding terminal
- Busbar supports can be complete overbuild up to 20mm width, height max. 19mm

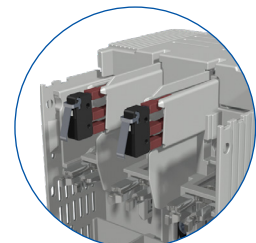


客户可以在后期自行增加开关位置状态指示器

- 每个单元通过分离的电路进行双重指示
- 开关容量高，应用广泛
10/3A (感性/阻性) AC250V

Retrofittable switch position indicator

- Separate circuits function by dual monitoring in each unit
- Wide range of applications due to high switching capacity 10/3A (resistive/ind.) AC250V





3极 > 60mm母线系统 > 母排厚度为5mm或者10mm > 上进线或下进线

3-pole design > 60mm busbar system > Busbar thickness 5mm or 10mm > Direction of cable terminal variable

尺寸 Size	端子类型 Terminal version	线径 Connection [mm ²]	电流 [A]	包装 PU	型号描述 Description	订货号 Article-No.
00	扁平端子 M8/2xM5 <i>Flat terminal M8/2xM5</i>	max. 95	160	1	KETO-00-3/60/AOU/F	T501116000
1	扁平端子 M10 / <i>Flat terminal M10</i>	max. 150	250		KETO-1-3/60/AOU/F	T101116000
2		max. 240	400		KETO-2-3/60/AOU/F	T201116000
3		max. 300	630		KETO-3-3/60/AOU/F	T301116000

版本FD: 减少安装深度104mm / Version FD: reduced installation depth 104mm



3极 > 100mm母线系统 > 在母线上使用螺栓固定 > 上进线或下进线

3-pole design > 100mm busbar system > Screw fixation on busbar > Direction of cable terminal variable

尺寸 Size	端子类型 Terminal version	线径 Connection [mm ²]	电流 [A]	包装 PU	型号描述 Description	订货号 Article-No.
1	扁平端子 M10 <i>Flat terminal M10</i>	max. 150	250	1	KETO-1-3/100/AOU/F	T102116000
2		max. 240	400		KETO-2-3/100/AOU/F	T202116000
3		max. 300	630		KETO-3-3/100/AOU/F	T302116000

单极 > 母线安装 > 螺栓固定

1-pole design > Busbar mounting > Screw fixation



尺寸 Size	端子类型 Terminal version	线径 Connection [mm ²]	电流 [A]	包装 PU	型号描述 Description	订货号 Article-No.
00	扁平端子 M8/2xM5 <i>Flat terminal M8/2xM5</i>	max. 95	160	2	KETO-00-1/AOU/F	T503115000
1	扁平端子 M10 / <i>Flat terminal M10</i>	max. 150	250		KETO-1-1/AOU/F	T103115000
2-3	扁平端子 M10 / <i>Flat terminal M10</i>	max. 300	400/630		KETO-3-1/AOU/F	T303115000

低压高分断熔断器式隔离开关 KETO

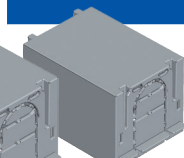
NH fuse-switch-disconnectors KETO

附件/Accessories

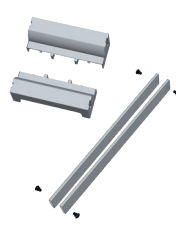
	产品描述 <i>Description</i>	尺寸 <i>Size</i>	包装 <i>PU</i>	型号 <i>Type</i>	订货号 <i>Article-No.</i>	页码 <i>Page</i>
錫形接线端子 / Clip terminal						
	1,5-70mm ² Cu	00	3	S00-Z	K5041013	-
	25-150mm ² Cu	1		S1	K1011005	-
	25-185mm ² Cu	2		S2	K2011005	-
	11 x 21 x 1mm Band Cu	3		S3	K3011005	-
棱形接线夹 / Prism clamp						
	10-70mm ² Al/Cu	00	3	P0070-Z	K5141038	-
	70-150mm ² Al/Cu	1		P1	K1111001	-
	120-240mm ² Al/Cu	2		P2	K2111001	-
	120-300mm ² Al/Cu	3		P3	K3111001	-
双层棱形接线夹 / Prism clamp for 2-conductors connection						
	2 x 70-95mm ² Al/Cu	1	3	P12	K1112002	-
	2 x 120-150mm ² Al/Cu	2		P22	K2112002	-
	2 x 120-240mm ² Al/Cu	3		P32	K3112002	-
框形接线夹 / Frame clamp						
	35-150mm ² Al/Cu	1	3	R150-KETO-1	T8011010	-
	95-300mm ² Al/Cu	2-3		R300-KETO-2+3	T8091010	-
多线端子块 / Multiwire-terminal blocks						
	框形接线端子 / Box terminal R95	00	3	MLA-KETO-00/ 3x25/R95	T8051060	T-24
	扁平接线端子 / Flat terminal M8			MLA-KETO-00/ 2x25/1x16/M8	T8051070	T-24
	扁平接线端子 / Flat terminal M8			MLA-KETO-00/ 4x10/M8	T8051080	T-24
相母线 / phase busbars						
	2 x KETO-00-3 35mm ²	00	5	PHS-KETO-00-3/2/35	T8051020	T-23
	2 x KETO-00-3 50mm ²			PHS-KETO-00-3/2/50	T8051120	T-23
	3 x KETO-00-3 35mm ²			PHS-KETO-00-3/3/35	T8051030	T-23
	3 x KETO-00-3 50mm ²			PHS-KETO-00-3/3/50	T8051130	T-23
	4 x KETO-00-3 35mm ²			PHS-KETO-00-3/4/35	T8051040	T-23
	4 x KETO-00-3 50mm ²			PHS-KETO-00-3/4/50	T8051140	T-23
	5 x KETO-00-3 35mm ²			PHS-KETO-00-3/5/35	T8051050	T-23
	5 x KETO-00-3 50mm ²			PHS-KETO-00-3/5/50	T8051150	T-23
馈线接线夹 / Feeding clamp						
	25-95mm ² Cu/Al, 绝缘的, 端子 M8 <i>25-95mm² Cu/Al, isolated, terminal M8</i> AC690V/DC1000V-250A	00	3	ESK-KETO-00/95	T8051090	T-24

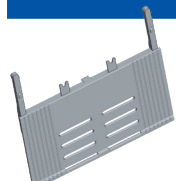
产品描述 <i>Description</i>	尺寸 <i>Size</i>	包装 <i>PU</i>	型号 <i>Type</i>	订货号 <i>Article-No.</i>	页码 <i>Page</i>	
端子盖罩, 3极, 可自定义的电缆入口 / Terminal cover, 3-pole, variable to open						
	长度 / Length 36mm, 底部 / bottom*	00	2	AA-KETO-00-3/36	T8053010	T-30
	长度 / Length 66mm, 顶部 / top*			AA-KETO-00-3/66	T8053130	T-30
	长度 / Length 42mm	1	AA-KETO-1-3	T8013030	T-31	
	长度 / Length 42mm	2	AA-KETO-2-3	T8023030	T-31	
	长度 / Length 42mm	3	AA-KETO-3-3	T8033030	T-31	

*高度调整: T00 ▶ T1, 2, 3 / For height adjustment: T00 ▶ T1, 2, 3

端子盖罩, 单极, 可自定义的电缆入口 / Terminal cover, 1-pole, variable to open						
	长度 / Length 36mm, 底部 / bottom*	00	2	AA-KETO-00-1/36	T8053030	T-34
	长度 / Length 66mm, 顶部 / top*			AA-KETO-00-1/66	T8053100	T-34
	长度 / Length 42mm	1	AA-KETO-1-1	T8013010	T-30	
	长度 / Length 42mm	3	AA-KETO-3-1	T8033010	T-30	

*高度调整: T00 ▶ T1, 2, 3 / For height adjustment: T00 ▶ T1, 2, 3

高度调节适配器 70 ▶ 90mm, 3极 / Height adjusting adapter 70 ▶ 90mm, 3-pole							
	系统尺寸 / System size 340-370mm	顶部 + 底部 <i>top + bottom</i>	00	2	HAA-KETO-00-3/ 70-90/OU	T8053110	T-31
	系统尺寸 / System size 300mm				HAA-KETO-00-3/ 70-90/OU	T8053140	T-31
	系统尺寸 / System size 340-370mm	右侧 + 左侧 <i>right + left</i>			HAA-KETO-00-3/ 70-90/SRL	T8053120	T-31
	系统尺寸 / System size 300mm				HAA-KETO-00-3/ 70-90/SRL	T8053150	T-31


扩展端子盖板, 3极 / Terminal cover extension, 3-pole						
	$h_1 = 39$ 或者 / or 34mm	00	2	ARV-KETO-00-3/39-34	T8053060	T-33
	$h_1 = 32$ mm			ARV-KETO-00-3/32	T8053070	T-33

h_1 = 母线顶部边缘到底板的距离 / h_1 = Distance top edge busbar to base plate


母线系统的重叠保护罩 / Overlap protector for busbar systems						
	$h_1 = 39$ 或者 / or 34mm, 用于连接 / for terminal F, S00, P00, R95	00	2	UGS-KETO-00-3/39-34	T8053040	T-33
	$h_1 = 32$ mm, 用于连接 / for terminal F, S00, P00, R95			UGS-KETO-00-3/32	T8053050	T-33
	$h_1 = 39$ 或者 / or 34mm, 用于连接 / for terminal R95T			UGS-KETO-00-3/ R95T/39-34	T8053080	T-32
	$h_1 = 32$ mm, 用于连接 / for terminal R95T			UGS-KETO-00-3/ R95T/32	T8053090	T-32
	$h_1 = 39$ 或者 / or 34mm	1	2	UGS-KETO-1-3/39-34	T8013040	T-32
	$h_1 = 32$ mm			UGS-KETO-1-3/32	T8013050	T-32
	$h_1 = 39$ 或者 / or 34mm	2	2	UGS-KETO-2-3/39-34	T8023040	T-32
	$h_1 = 32$ mm			UGS-KETO-2-3/32	T8023050	T-32
$h_1 = 39$ 或者 / or 34mm	3	2	UGS-KETO-3-3/39-34	T8033040	T-32	
$h_1 = 32$ mm			UGS-KETO-3-3/32	T8033050	T-32	

h_1 = 母线顶部边缘到底板的距离 / h_1 = Distance top edge busbar to base plate

	产品描述 <i>Description</i>	尺寸 <i>Size</i>	包装 <i>PU</i>	型号 <i>Type</i>	订货号 <i>Article-No.</i>	页码 <i>Page</i>
--	----------------------------	-------------------	-----------------	-------------------	---------------------------	-------------------

短款上接触盖罩 / <i>Upper contact cover short version</i>						
	用于安装长度为300mm的安装部分 <i>For installation in mounting section of 300mm length</i>	1	1	OGS-KETO 1-3	T8013010	-
		2	1	OGS-KETO 2-3	T8023010	-

侧面母线盖板 / <i>Lateral busbar cover</i>						
	3极 / <i>3-pole</i>	-	10	A-SST-60/3	G8431001	G-24
	4极 / <i>4-pole</i>	-	10	A-SST-60/4	G8441002	G-25
	3极 / <i>3-pole</i> , 可以用于KETO的组建 / <i>can be built over with KETO</i>	-	5	A-SST-60/3-A	G8431046	G-24

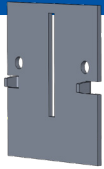
盖罩支架 / <i>cover support</i>						
	顶部或者底部 / <i>top or bottom side</i> 高度 / <i>level</i> 60mm, 70mm	00	10	BLA-KETO-00-OU	T8053200	T-34
	侧面 / <i>lateral</i> , 高度 / <i>level</i> 32mm, 60mm, 70mm			BLA-KETO-00-SRL	T8053210	T-34
	顶部或者底部, 侧面 / <i>top or bottom side, lateral</i> 高度 / <i>level</i> 32mm, 60mm, 70mm	1, 2, 3		BLA-KETO-123	T8013100	T-34

DIN导轨安装部件 / <i>DIN rail fixing parts</i>						
	用于配合安装符合EN 50022的DIN导轨 <i>For mounting on DIN rails acc. to EN 50022</i>	00	1	Z-KETO-00 100-150MM	T8055010	-
		1		Z-KETO-1 100-150MM	T8015010	-

DIN导轨安装部件, 高度调节+ 3mm / <i>DIN rail fixing parts with +3mm height adjusting</i>						
	用于配合安装符合EN 50022的DIN导轨 <i>For mounting on DIN rails acc. to EN 50022</i>	00	1	Z-KETO-00-3 100-150 mm	T8055060	-

用于安装在外壳中, 设计用于带有调节框架的设备, 例如: Striebel&John
For mounting in enclosures, designed for devices with adjusting frames, e.g. Striebel & John.

产品描述 <i>Description</i>	尺寸 <i>Size</i>	包装 <i>PU</i>	型号 <i>Type</i>	订货号 <i>Article-No.</i>	页码 <i>Page</i>
----------------------------	-------------------	-----------------	-------------------	---------------------------	-------------------



盖罩内锁 / Contact cover interlock

用于高度调节 (+3mm)的盖罩系统
*For height adjustment (+3mm)
an cover systems*

00

1

Z-KETO-00-3

T8055050

-

Für Einbau in Gehäusesysteme, die auf Geräte mit Blendrahmen ausgelegt sind, z.B. Striebel & John
用于安装在外壳中, 设计用于带有调节框架的设备, 例如: Striebel&John.

盖罩内锁 / Contact cover interlock	接触盖内锁只能通过工具进行操作 <i>Interlock for contact covers which can only be operated by tool</i>	00-3	10	VKA-KETO-00123-3	T8094010	-
--------------------------------	-----------------------------------------------------------------------------------------------	------	----	------------------	----------	---



盖罩内锁 / Contact cover interlock

接触盖内锁只能通过工具进行操作
*Interlock for contact covers which can
only be operated by tool*

00-3

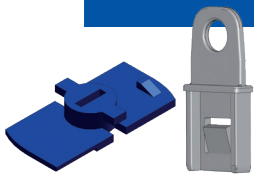
10

VKA-KETO-00123-3

T8094010

-

内锁装置 / Interlock device	用于在闭合状态下锁定挂锁 (最大直径 6mm) <i>For locking with padlock in the closed condition (diameter 6mm max.)</i>	00-3	10	ASV-KETO-00123	T8054010	-
-------------------------	---------------------------------------------------------------------------------------------------------------	------	----	----------------	----------	---



内锁装置 / Interlock device

用于在闭合状态下锁定挂锁 (最大直径
6mm)
*For locking with padlock in the
closed condition (diameter 6mm max.)*

00-3

10

ASV-KETO-00123

T8054010

-

电力防盗保护 / Power theft protection	用于视窗锁定防篡改 (1 Set = 3 Stk./ pc.) / <i>For tamper-proof locking of the windows (1 Set = 3 Stk./pc.)</i>	00-3	1	SDS-KETO-00123	T8094020	-
---------------------------------	--------------------------------------------------------------------------------------------------------------	------	---	----------------	----------	---



电力防盗保护 / Power theft protection

用于视窗锁定防篡改 (1 Set = 3 Stk./
pc.) / *For tamper-proof
locking of the windows (1 Set = 3 Stk./pc.)*

00-3

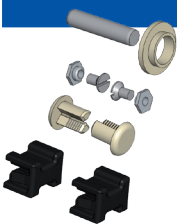
1

SDS-KETO-00123

T8094020

-

4极连接套件 / Connecting kit 4-pole	用于连接4极隔离开关 / <i>For making of 4-pole disconnectors</i>	00-3	1	VBS-KETO-00/2+4P	T8055020	-
--------------------------------	------------------------------------------------------------	------	---	------------------	----------	---



4极连接套件 / Connecting kit 4-pole

用于连接4极隔离开关 / *For making of
4-pole disconnectors*

00-3

1

VBS-KETO-00/2+4P

T8055020

-

VBS-KETO-123/2+4P

T8095020

-

低压高分断熔断器式隔离开关 KETO

NH fuse-switch-disconnectors KETO

技术参数 / Technical data

型号 Type		KETO-00 底板式安装 Baseplate mounting		KETO-00 母线安装 Busbar mounting	
依据标准 / According to standard		DIN EN 60947-3			
参照熔断体标准 DIN VDE 0636-2 For NH fuse-links acc. to DIN VDE 0636-2	尺寸 Size	000/00			
额定工作电压 Rated operational voltage	U_e V	AC690 DC440			
额定工作电流 ¹⁾ Rated operational current ¹⁾	I_e A	160			
使用熔断体时的约定发热电流 ¹⁾ Conv. free air thermal current with fuse-links ¹⁾	I_{th} A	160			
使用隔离刀片时的约定发热电流 ¹⁾ Conv. free air thermal current with solid-links ¹⁾	I_{th} A	210	根据需求 On request		
额定频率 / Rated frequency	f Hz	50-60			
额定绝缘电压 Rated insulation voltage	U_i V	AC800			
		1P	3P	1P	3P
约定发热电流损耗(不安装熔断体) Total power loss at I_{th} (without fuse-links)	P_v W	3	9	5	14
80%约定发热电流损耗(不安装熔断体) ²⁾ Power loss at 80% I_{th} (without fuse-links) ²⁾	P_v W	1,9	5,8	3	9
额定冲击耐受电压 Rated impulse withstand voltage	U_{imp} kV	8			
使用类别 ³⁾ Utilization category ³⁾	–	AC-23B (400V/160A) AC-22B (500V/160A) AC-21B (690V/160A) DC-22B (250V/160A)			
额定短路分断能力 ^{3) 4)} Rated conditional short-circuit current ^{3) 4)}	– kA	120 (500V) 100 (690V)			
额定短时耐受电流 Rated short-time withstand current	I_{cw} kA	5/1s			
单位熔断体最大允许损耗功率 Max. permis. power loss per fuse-link	P_a W	12			

1) 如果将多个开关安装于在同一开关柜中时, 请根据DIN EN 61439考虑额定分散系数。
In case of mounting of several units in low voltage switchgear-combinations, please consider rated diversity factors acc. to DIN EN 61439.

2) 更换设备的参考值请根据DIN EN 61439第10.10.4.2条款。
Reference value for replacement of devices acc. to DIN EN 61439-1 clause 10.10.4.2.

3) 必须考虑到接地导电部件的最小距离:
It must be considered a minimum distance to earthed, conductive parts:
侧面: 20mm/顶部: 50mm / Lateral: 20mm/Above: 50mm
3a) 侧面: 50mm/顶部: 100mm / Lateral: 50mm/Above: 100mm

4) 请使用特性为gG的低压熔断体进行型式试验 / Type tested with NH fuse-links characteristic gG

型号 Type			KETO-00 底板式安装 Baseplate mounting		KETO-00 母线安装 Busbar mounting	
电缆接线端子 Cable terminal	扁平接线端子 Flat terminal		螺栓安装 Bolt diameter	-	-	M8
			拧紧力矩 Tightening torque	M _a	Nm	12-15
	镯形接线端子 Clip terminal	S00-70	夹紧横截面 Clamping cross-section	-	mm ²	○: 1,5-70 Cu □: 6 x 9 x 0,8 Cu
			拧紧力矩 Tightening torque	M _a	Nm	2,6
	棱形接线夹 Clamp	P00-70 P00-95	夹紧横截面 Clamping cross-section	-	mm ²	10-70 Al/Cu 35-95 Al/Cu
			拧紧力矩 Tightening torque	M _a	Nm	2,6
	框形接线夹 Clamp	R95	夹紧横截面 Clamping cross-section	-	mm ²	1,5-95 Al/Cu (Al 95: max. 125A) ⁶⁾
拧紧力矩 Tightening torque			M _a	Nm	4,5	
防护等级 Degree of protection	安装完毕后, 开关面板侧 Front side Device fitted		工作状态 Operating condition	-	-	IP20
			带有夹具和侧盖/ With clamp- and lateral cover	-	-	IP2XC
			开关打开状态 Switching element open	-	-	IP10
工作条件 Operating conditions	环境温度 ⁵⁾ / Ambient temperature ⁵⁾		T _{amb}	°C	-25 bis / up to +70	
	额定工作类型 / Rated operating mode		-	-	不间断工作制 / Uninterrupted duty	
	操作方式 Actuation		-	-	有关人力操作 Dependent manual operation	
	安装位置 Mounting position		-	-	垂直/水平 vertical/horizontal	
	海拔高度 / Altitude		-	m	可达 / Up to 2000	
	污染等级 / Pollution degree		-	-	3	
	过压等级 / Overvoltage category		-	-	III	

注解 / Annotation: ○ = 圆形导体 / Round conductor □ = 扁状导体 / Strip conductor

5) 35°C 为正常使用温度。35°C到70°C 需要降低额定工作电流使用。参见附录。
35°C Normal temperature, above 35°C up to 70°C with reduces operating current, see Appendix.

6) 机械预加工铝导线注意清洁和润滑!
Pretread Al-conductors mechanically! Cleaning and greasing!

低压高分断熔断器式隔离开关 KETO

NH fuse-switch-disconnectors KETO

型号 Type		KETO-1 底板式安装 Baseplate mounting		KETO-1 母线安装 Busbar mounting		
依据标准 / According to standard		DIN EN 60947-3				
参照熔断体标准 DIN VDE 0636-2 For NH fuse-links acc. to DIN VDE 0636-2	尺寸 Size	1				
额定工作电压 Rated operational voltage	U _e V	AC690 DC440				
额定工作电流 ¹⁾ Rated operational current ¹⁾	I _e A	250				
使用熔断体时的约定发热电流 ¹⁾ Conv. free air thermal current with fuse-links ¹⁾	I _{th} A	250				
使用隔离刀片时的约定发热电流 ¹⁾ Conv. free air thermal current with solid-links ¹⁾	I _{th} A	325				
额定频率 / Rated frequency	f Hz	50-60				
额定绝缘电压 Rated insulation voltage	U _i V	AC800				
电气特性 Electrical characteristics			1P	3P	1P	3P
约定发热电流损耗(不安装熔断体) Total power loss at I _{th} (without fuse-links)	P _v W	5	15	7	22	
80%约定发热电流损耗(不安装熔断体) ²⁾ Power loss at 80% I _{th} (without fuse-links) ²⁾	P _v W	3,2	9,6	4,7	14,1	
额定冲击耐受电压 Rated impulse withstand voltage	U _{imp} kV	8				
使用类别 ³⁾ Utilization category ³⁾	–	AC-23B (400V/250A) AC-22B (500V/250A) AC-21B (690V/250A) DC-22B (250V/250A) 3P: DC-21B (440V/250A)				
额定短路分断能力 ^{3) 4)} Rated conditional short-circuit current ^{3) 4)}	– kA	120 (500V) 100 (690V)				
额定短时耐受电流 Rated short-time withstand current	I _{cw} kA	8,6/1s				
单位熔断体最大允许损耗功率 Max. permis. power loss per fuse-link	P _a W	23				

1) 如果将多个开关安装于在同一开关柜中时, 请根据DIN EN 61439考虑额定分散系数。
In case of mounting of several units in low voltage switchgear-combinations, please consider rated diversity factors acc. to DIN EN 61439.

2) 更换设备的参考值请根据DIN EN 61439第10.10.4.2条款。
Reference value for replacement of devices acc. to DIN EN 61439-1 clause 10.10.4.2.

3) 必须考虑到接地导电部件的最小距离:
It must be considered a minimum distance to earthed, conductive parts:
侧面: 20mm / 顶部: 50mm / Lateral: 20mm / Above: 50mm

4) 请使用特性为gG的低压熔断体进行型式试验 / Type tested with NH fuse-links characteristic gG

型号 Type			KETO-1 底板式安装 Baseplate mounting		KETO-1 母线安装 Busbar mounting	
电缆接线端子 Cable terminal	扁平接线端子 Flat terminal	螺栓安装 Bolt diameter	-	-	M10	
		拧紧力矩 Tightening torque	M _a	Nm	30-35	
	镯形接线端子 Clip terminal	S1	夹紧横截面 Clamping cross-section	-	mm ²	○: 25-150 Cu □: 6 x 16 x 0,8 Cu
			拧紧力矩 Tightening torque	M _a	Nm	9,5
	棱形接线夹 Clamp	P1	夹紧横截面 Clamping cross-section	-	mm ²	10-150 Al/Cu
			拧紧力矩 Tightening torque	M _a	Nm	4,5
	框形接线夹 Clamp	P12	夹紧横截面 Clamping cross-section	-	mm ²	2 x (10-150) Al/Cu
			拧紧力矩 Tightening torque	M _a	Nm	4,5
		R150	夹紧横截面 Clamping cross-section	-	mm ²	35-150 Al/Cu
			拧紧力矩 Tightening torque	M _a	Nm	12
防护等级 Degree of protection	安装完毕后, 开关面板侧 Front side Device fitted	工作状态 Operating condition	-	-	IP20	
		带有夹具和侧盖 / With clamp- and lateral cover	-	-	IP2XC	
		开关打开状态 Switching element open	-	-	IP10	
工作条件 Operating conditions	环境温度 ⁵⁾ / Ambient temperature ⁵⁾		T _{amb}	°C	-25 bis / up to +70	
	额定工作类型 / Rated operating mode		-	-	不间断工作制 / Uninterrupted duty	
	操作方式 Actuation		-	-	有关人力操作 Dependent manual operation	
	安装位置 Mounting position		-	-	垂直/水平 vertical/horizontal	
	海拔高度 / Altitude		-	m	可达 / Up to 2000	
	污染等级 / Pollution degree		-	-	3	
	过压等级 / Overvoltage category		-	-	III	

注解 / Annotation: ○ = 圆形导体 / Round conductor □ = 扁状导体 / Strip conductor

5) 35°C 为正常使用温度, 35°C到70°C 需要降低额定工作电流使用, 参见附录。
35°C Normal temperature, above 35°C up to 70°C with reduces operating current, see Appendix.

低压高分断熔断器式隔离开关 KETO

NH fuse-switch-disconnectors KETO

型号 Type		KETO-2 底板式安装 Baseplate mounting		KETO-2 母线安装 Busbar mounting		
电气特性 Electrical characteristics	依据标准 / According to standard		DIN EN 60947-3			
	参照熔断体标准 DIN VDE 0636-2 For NH fuse-links acc. to DIN VDE 0636-2	尺寸 Size	2			
	额定工作电压 Rated operational voltage	U _e V	AC690 DC440			
	额定工作电流 ¹⁾ Rated operational current ¹⁾	I _e A	400			
	使用熔断体时的约定发热电流 ¹⁾ Conv. free air thermal current with fuse-links ¹⁾	I _{th} A	400			
	使用隔离刀片时的约定发热电流 ¹⁾ Conv. free air thermal current with solid-links ¹⁾	I _{th} A	520			
	额定频率 / Rated frequency	f Hz	50-60			
	额定绝缘电压 Rated insulation voltage	U _i V	AC1000			
			1P	3P	1P	3P
	约定发热电流损耗(不安装熔断体) Total power loss at I _{th} (without fuse-links)	P _v W	9	28	12	36
	80%约定发热电流损耗(不安装熔断体) ²⁾ Power loss at 80% I _{th} (without fuse-links) ²⁾	P _v W	6	17,9	7,7	23
	额定冲击耐受电压 Rated impulse withstand voltage	U _{imp} kV	8			
	使用类别 ³⁾ Utilization category ³⁾	—	AC-23B (400V/400A) AC-22B (500V/400A) AC-21B (690V/400A) DC-22B (440V/400A)			
	额定短路分断能力 ^{3) 4)} Rated conditional short-circuit current ^{3) 4)}	— kA	120 (500V) 100 (690V)			
额定短时耐受电流 Rated short-time withstand current	I _{cw} kA	15/1s				
单位熔断体最大允许损耗功率 Max. perm. power loss per fuse-link	P _a W	34				

1) 如果将多个开关安装于在同一开关柜中时, 请根据DIN EN 61439考虑额定分散系数。
In case of mounting of several units in low voltage switchgear-combinations, please consider rated diversity factors acc. to DIN EN 61439.

2) 更换设备的参考值请根据DIN EN 61439第10.10.4.2条款。
Reference value for replacement of devices acc. to DIN EN 61439-1 clause 10.10.4.2.

3) 必须考虑到接地导电部件的最小距离:
It must be considered a minimum distance to earthed, conductive parts:
侧面: 20mm/顶部: 50mm/ Lateral: 20mm / Above: 50mm

4) 请使用特性为gG的低压熔断体进行型式试验。 / Type tested with NH fuse-links characteristic gG

型号 Type			KETO-2 底板式安装 Baseplate mounting		KETO-2 母线安装 Busbar mounting	
电缆接线端子 Cable terminal	扁平接线端子 Flat terminal	螺栓安装 Bolt diameter	-	-	M10	
		拧紧力矩 Tightening torque	M _a	Nm	30-35	
	镯形接线端子 Clip terminal	S2	夹紧横截面 Clamping cross-section	-	mm ²	○: 25-185 Cu □: 10 x 16 x 0,8 Cu
			拧紧力矩 Tightening torque	M _a	Nm	23
	棱形接线夹 Clamp	P2	夹紧横截面 Clamping cross-section	-	mm ²	120-240 Al/Cu
			拧紧力矩 Tightening torque	M _a	Nm	11
	框形接线夹 Clamp	P22	夹紧横截面 Clamping cross-section	-	mm ²	2 x (120-150) Al/Cu
			拧紧力矩 Tightening torque	M _a	Nm	11
		R300	夹紧横截面 Clamping cross-section	-	mm ²	95-300 Al/Cu
			拧紧力矩 Tightening torque	M _a	Nm	20
防护等级 Degree of protection	安装完毕后, 开关面板侧 Front side Device fitted	工作状态 Operating condition	-	-	IP20	
		带有夹具和侧盖/ With clamp- and lateral cover	-	-	IP2XC	
		开关打开状态 Switching element open	-	-	IP10	
工作条件 Operating conditions	环境温度 ⁵⁾ / Ambient temperature ⁵⁾		T _{amb}	°C	-25 bis / up to +70	
	额定工作类型 / Rated operating mode		-	-	不间断工作制 / Uninterrupted duty	
	操作方式 Actuation		-	-	有关人力操作 Dependent manual operation	
	安装位置 Mounting position		-	-	垂直/水平 vertical/horizontal	
	海拔高度 / Altitude		-	m	可达 / Up to 2000	
	污染等级 / Pollution degree		-	-	3	
	过压等级 / Overvoltage category		-	-	III	

注解 / Annotation: ○ = 圆形导体 / Round conductor □ = 扁状导体 / Strip conductor

5) 35°C 为正常使用温度, 35°C到70°C 需要降低额定工作电流使用, 参见附录。
35°C Normal temperature, above 35°C up to 70°C with reduces operating current, see Appendix.

低压高分断熔断器式隔离开关 KETO

NH fuse-switch-disconnectors KETO

型号 Type		KETO-3 底板式安装 Baseplate mounting		KETO-3 母线安装 Busbar mounting		
依据标准 / According to standard		DIN EN 60947-3				
参照熔断体标准 DIN VDE 0636-2 For NH fuse-links acc. to DIN VDE 0636-2	尺寸 Size	3				
额定工作电压 Rated operational voltage	U_e V	AC690 DC440				
额定工作电流 ¹⁾ Rated operational current ¹⁾	I_e A	630				
使用熔断体时的约定发热电流 ¹⁾ Conv. free air thermal current with fuse-links ¹⁾	I_{th} A	630				
使用隔离刀片时的约定发热电流 ¹⁾ Conv. free air thermal current with solid-links ¹⁾	I_{th} A	910	根据需求 On request			
额定频率 / Rated frequency	f Hz	50-60				
额定绝缘电压 Rated insulation voltage	U_i V	AC1000				
电气特性 Electrical characteristics		1P	3P	1P	3P	
	约定发热电流损耗(不安装熔断体) Total power loss at I_{th} (without fuse-links)	P_v W	17	51	29	86
	80%约定发热电流损耗(不安装熔断体) ²⁾ Power loss at 80% I_{th} (without fuse-links) ²⁾	P_v W	10,9	32,6	18,3	55
	额定冲击耐受电压 Rated impulse withstand voltage	U_{imp} kV	8			
	使用类别 ³⁾ Utilization category ³⁾	–	AC-23B (400V/630A) AC-22B (500V/630A) AC-21B (690V/630A) DC-21B (250V/630A) 3P: DC-22B (440V/630A)			
	额定短路分断能力 ^{3) 4)} Rated conditional short-circuit current ^{3) 4)}	–	kA		120 (500V) 100 (690V)	
	额定短时耐受电流 Rated short-time withstand current	I_{cw} kA	15kA/1s			
	单位熔断体最大允许损耗功率 Max. perm. power loss per fuse-link	P_a W	48			

- 1) 如果将多个开关安装于在同一开关柜中时, 请根据DIN EN 61439考虑额定分散系数。
In case of mounting of several units in low voltage switchgear-combinations, please consider rated diversity factors acc. to DIN EN 61439.
- 2) 更换设备的参考值请根据DIN EN 61439第10.10.4.2条款。
Reference value for replacement of devices acc. to DIN EN 61439-1 clause 10.10.4.2.
- 3) 必须考虑到接地导电部件的最小距离:
It must be considered a minimum distance to earthed, conductive parts:
侧面: 20mm/顶部: 50mm / Lateral: 20mm / Above: 50mm
- 4) 请使用特性为gG的低压熔断体进行型式试验 / Type tested with NH fuse-links characteristic gG

型号 Type			KETO-3 底板式安装 Baseplate mounting		KETO-3 母线安装 Busbar mounting	
电缆接线端子 Cable terminal	扁平接线端子 Flat terminal	螺栓安装 Bolt diameter	-	-	M10/M12	
		拧紧力矩 Tightening torque	M _a	Nm	30-35	
	镯形接线端子 Clip terminal	S3	夹紧横截面 Clamping cross-section	-	mm ²	□: 11 x 21 x 1 Cu
			拧紧力矩 Tightening torque	M _a	Nm	23
	棱形接线夹 Clamp	P3	夹紧横截面 Clamping cross-section	-	mm ²	120-300 Al/Cu
			拧紧力矩 Tightening torque	M _a	Nm	11
	框形接线夹 Clamp	P32	夹紧横截面 Clamping cross-section	-	mm ²	2 x (120-240) Al/Cu
			拧紧力矩 Tightening torque	M _a	Nm	11
		R300	夹紧横截面 Clamping cross-section	-	mm ²	95-300 Al/Cu
			拧紧力矩 Tightening torque	M _a	Nm	20
防护等级 Degree of protection	安装完毕后, 开关面板侧 Front side Device fitted	工作状态 Operating condition	-	-	IP20	
		带有夹具和侧盖/ With clamp- and lateral cover	-	-	IP2XC	
		开关打开状态 Switching element open	-	-	IP10	
工作条件 Operating conditions	环境温度 ⁵⁾ / Ambient temperature ⁵⁾		T _{amb}	°C	-25 bis / up to +70	
	额定工作类型 / Rated operating mode		-	-	不间断工作制 / Uninterrupted duty	
	操作方式 Actuation		-	-	有关人力操作 Dependent manual operation	
	安装位置 Mounting position		-	-	垂直/水平 vertical/horizontal	
	海拔高度 / Altitude		-	m	可达 / Up to 2000	
	污染等级 / Pollution degree		-	-	3	
	过压等级 / Overvoltage category		-	-	III	

注解 / Annotation: ○ = 圆形导体 / Round conductor □ = 扁状导体 / Strip conductor

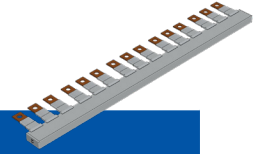
5) 35°C 为正常使用温度, 35°C到70°C 需要降低额定工作电流使用, 参见附录。
35°C Normal temperature, above 35°C up to 70°C with reduces operating current, see Appendix.

低压高分断熔断器式隔离开关 KETO

NH fuse-switch-disconnectors KETO

相母线技术参数

Technical data for phase busbars



类型 Type	
标准 / Standards	EN 60947-1:2007 / IEC 60947-1:2007
气候稳定性 / Climate stability	依据 DIN EN 60068 / According to DIN EN 60068
绝缘条件 Insulation coordination	过压等级 III/污染等级 2 Overvoltage cat. III/degree of pollution 2

电气参数 Electrical data			
截面 / Cross section	mm ²	35	50
冲击电压强度 / Impulse voltage strenght	kV	≥6,5	≥8,5
最小电气间隙 / Min. air distance	mm	>6	>8
最小爬电距离 / Min. creeping distance	mm	>8,5	>9
最大额定工作电压 / Max. operating voltage	V	AC690	
防护等级 / Protection class	-	IP20	
短路耐受能力 Short circuit rating	-	I _{pk} =25kA/0,1s (浪涌能量 / Surge energy capacity I _{pk}) ICC 100kA · NH3 355A gC500V JM	
介电强度 / Dielectric strenght	kV/mm	≥32	

不同馈电端在环境温度为35°C 下的负载能力

Capacity at 35°C ambient temperature depending of feeding point

截面 / Cross section	mm ²	35		50	
母线长度 / Busbar lenght	mm	Max. 1000	Max. 300	Max. 1000	Max. 300

在开始或结束处馈电

Feeding at beginning/ending

最大相电流 I _s / Max. current I _s / Phase	A	125	200	200	250
横截面积 / Connection cross current	mm ²	35	70	70	95

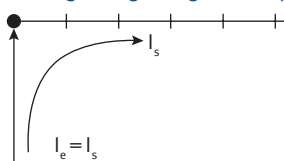
其他馈电

Other feedings

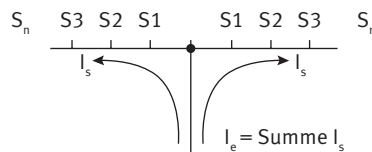
最大相电流 I _s / Max. current I _s / Phase	A	160	250	250	315
横截面积 / Connection cross current	mm ²	70	95	95	2x70

馈电 (在母线的开始或结束处)

Feeding at beginning or end of bar



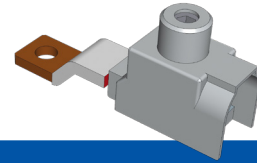
其他馈电 / Other feedings



在中心馈电的情况下，必须注意确保每个母线支路的馈线S1...S_n 的总和不大于母线相电流 I_s 的最大值。

In case of center-feeding, please note that the sum of junction currents S1...S_n per railbranch may not be bigger than the above named max. busbar current I_s/Phase.

馈电接线夹的技术参数
Technical data for feeding clamps



型号 Type	
热变形温度 / Heat deflection temp.	125°C UL94V0
相比电痕化指数CTI / Comparative tracking index	600V
标准 Regulations	EN 60998-1:2004; EN 60998-2:2004; EN 60999-1:2000; EN 60999-2:2003

电气参数 Electrical data	
最大电气负荷 / Max. electrical load	AC690V/DC1000V-250A
保护等级 / Protection class	IP20

横截面 Cross sections			
	导体类型 / Conductors		扭矩 ¹⁾ Torque ¹⁾
	单芯 / single wire	细线 (带端套) fine wire (with end sleeve)	
	多股 / multi wire		
Ø14mm	25mm ² -95mm ²	25mm ² -70mm ²	13Nm

1) 原则上, 规定应用紧固扭矩。无论何处规定限制, 紧固扭矩的公差可以是标称值的±10% 的最大值。
In principle, the tightening torques specified are to be applied. Where no limits are specified, the tolerance on the tightening torque of screw and clamp connections may be a maximum of ± 10% of the nominal value.





重要 / Important

该端子适用于铜铝导体。连接铝导线时请注意常用的操作指南。清洁刷洗接触表面并且涂适当的润滑油脂。作为预防措施, 应在6-8周后重新紧固。

This Terminal is suitable for Alu and Cu conductors. Please pay attention to the common handling guidelines when connecting the Aluminium conductors. Clean and brush the contact surfaces and lubricate them with an appropriate grease. As precaution the connections should get retightened after 6-8 Weeks.



多线端子块 / **Multiwire-terminal blocks**

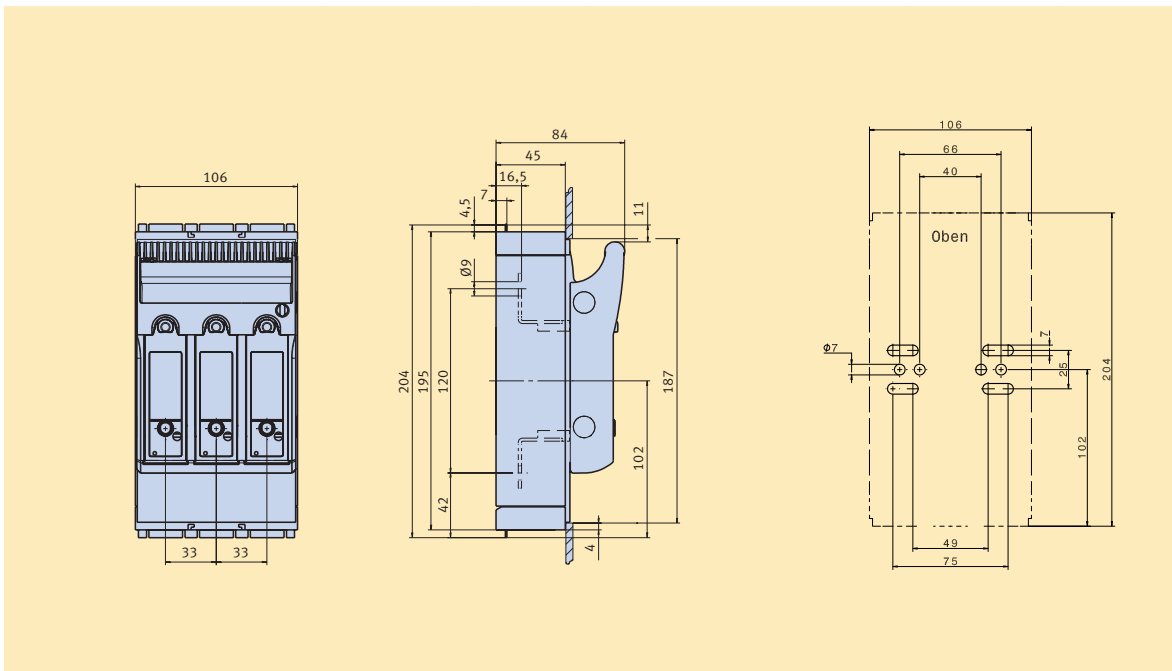
型号 Type	订货号 Article-No.	导体 / Conductors		扭矩 Torque	I [A]
					
MLA-KETO-00/3x25/R95	T8051060	3x2,5-25mm ²	3x2,5-16mm ²	1,5-2Nm	160
MLA-KETO-00/2x25/1x16/M8	T8051070	1x2,5-16mm ² 2x2,5-25mm ²	1x2,5-10mm ² 2x2,5-16mm ²		
MLA-KETO-00/4x10/M8	T8051080	4x2,5-10mm ²	4x2,5-6mm ²		

低压高分断熔断器式隔离开关 KETO

NH fuse-switch-disconnectors KETO

尺寸 / Dimensions

型号 Type	订货号 Article-No.	页码 Page	型号 Type	订货号 Article-No.	页码 Page
KETO-00-3/F	T500113000	T-8	-	-	-



型号 Type	订货号 Article-No.	页码 Page	型号 Type	订货号 Article-No.	页码 Page
KETO-1-3/F	T100113000	T-8	KETO-2-3/F	T200113000	T-8
KETO-3-3/F	T300113000	e T-8	-	-	-

Typ	a	c	r	v	w	x	y
KETO-1-3	184	306	138	150	50	25	11
KETO-2-3	210	306	138	166	50	0	11
KETO-3-3	250	306	138	195	50	0	11

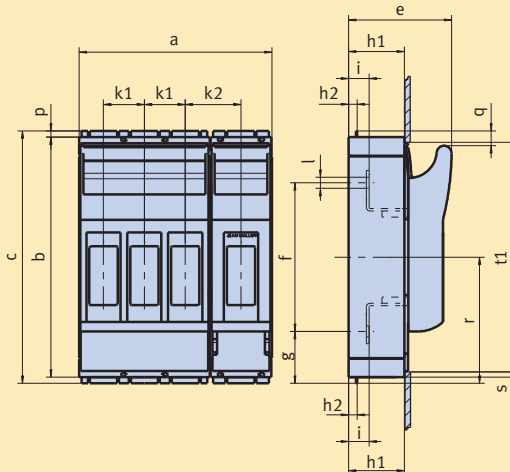
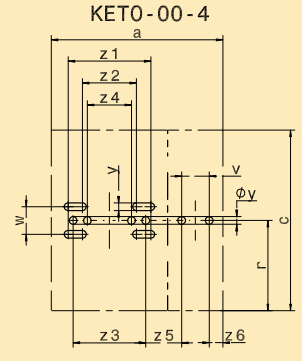
注意：KETO-1-3安装孔为腰形孔，KETO-2-3和KETO-3-3安装孔为圆形孔。

型号/Type	a	b	c	e	f	g	h1	h2	h3	i	k	l	p	q	r	s	t1	t2	u
KETO-1-3/F	184	298	306	117	185	46	70	32	-	25	58	∅10,5	4	19	138	5	272	-	-
KETO-2-3/F	210	298	306	134	205	36	90	32	70	26	66	∅14	4	19	138	10	268	288	5
KETO-3-3/F	250	298	306	143	205	36	90	32	70	26	82	∅14	4	19	138	10	268	288	5

型号 Type	订货号 Article-No.	页码 Page	型号 Type	订货号 Article-No.	页码 Page
KETO-00-4/F	T500114000	T-8	-	-	-

Typ	a	c	r	v	w	w1	y	y1	x	z1	z2	z3	z4	z5	z6
KETO-00-4	156	204	102	25	25	-	7	-	-	75	49	66	40	32,5	12,5

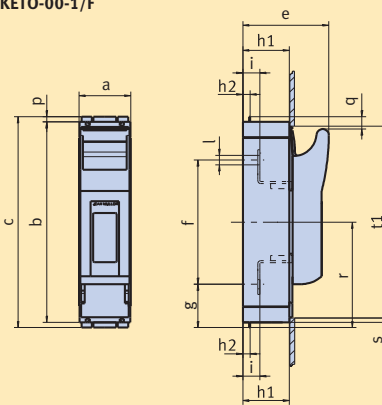
KETO-00-4/F

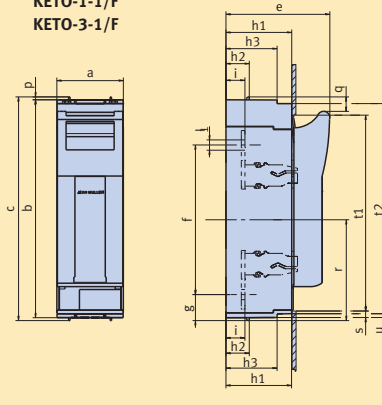
型号/Type	a	b	c	e	f	g	h1	h2	h3	k1	k2	i	l	p	q	r	s	t1	t2	u
KETO-00-4/F	156	195	204	84	120	42	45	7	-	33	45	16,5	Ø9	4,5	12	102	5	187	-	-

型号 Type	订货号 Article-No.	页码 Page	型号 Type	订货号 Article-No.	页码 Page
KETO-00-1/F	T500111000	T-8	KETO-1-1/F	T100111000	T-8
KETO-3-1/F	T300111000	T-8	-	-	-

KETO-00-1/F

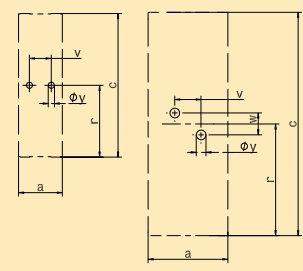


KETO-1-1/F
KETO-3-1/F



Typ	a	c	r	v	w	y
KETO-00-1	50	204	102	25	-	7
KETO-1-1	69	306	138	30	25	11
KETO-3-1	91	306	138	30	25	11

KETO-00-1 **KETO-1 bzw. 3-1**



型号/Type	a	b	c	e	f	g	h1	h2	h3	i	l	p	q	r	s	t1	t2	u
KETO-00-1/F	50	195	204	84	120	42	45	7	-	16,5	Ø9	4,5	12	102	5	187	-	-
KETO-1-1/F	69	298	306	117	185	46	70	32	-	25	Ø10,5	4	19	138	5	272	-	-
KETO-3-1/F	91	298	306	143	205	36	90	32	70	26	Ø14	4	19	138	10	268	288	5

低压高分断熔断器式隔离开关 KETO

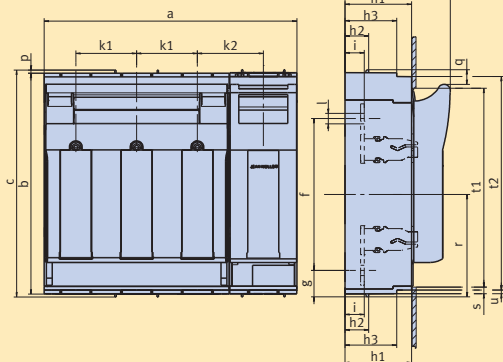
NH fuse-switch-disconnectors KETO

尺寸 / Dimensions

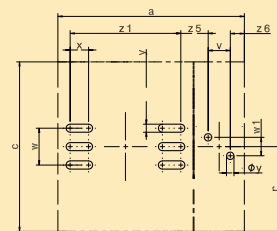
型号 Type	订货号 Article-No.	页码 Page	型号 Type	订货号 Article-No.	页码 Page
KETO-1-4/F	T100114000	T-8	KETO-3-4/F	T300114000	T-8

Typ	a	c	r	v	w	w1	y	y1	x	z1	z2	z3	z4	z5	z6
KETO-1-4	254	306	138	30	50	25	11	-	25	150	-	-	-	37	19,5
KETO-3-4	341,5	306	138	30	50	25	11	11	-	195	-	-	-	58,5	30,5

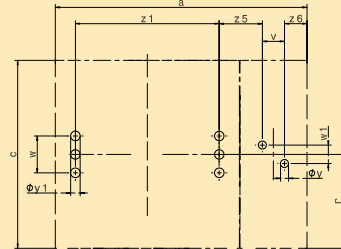
KETO-1 bzw. 3-4



KETO-1 -4

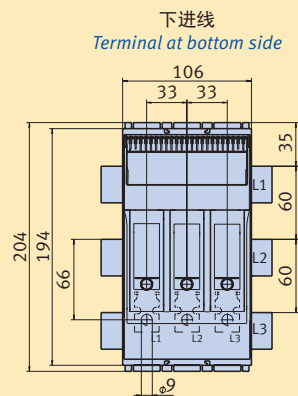
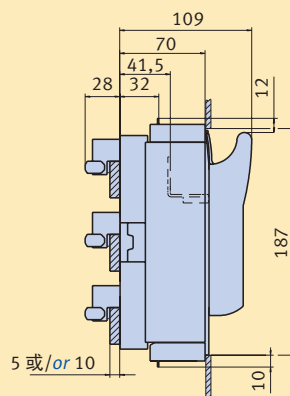
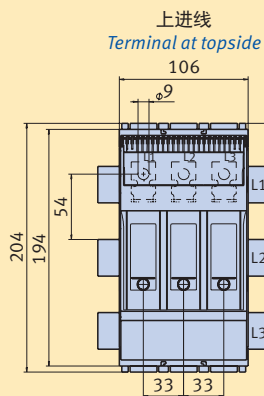


KETO-3 -4

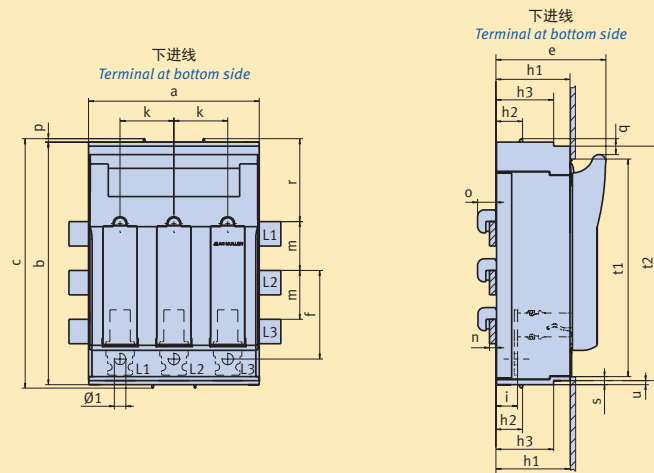


Typ/Type	a	b	c	e	f	g	h1	h2	h3	k1	k2	i	l	p	q	r	s	t1	t2	u
KETO-1-4/F	254	298	306	117	185	46	70	32	-	58	69	25	Ø10,5	4	19	138	5	272	-	-
KETO-3-4/F	341,5	298	306	143	205	36	90	32	70	82	89	26	Ø14	4	19	138	10	268	288	5

型号 Type	订货号 Article-No.	页码 Page
KETO-00-3/60/AOU/F	T501116000	T-10

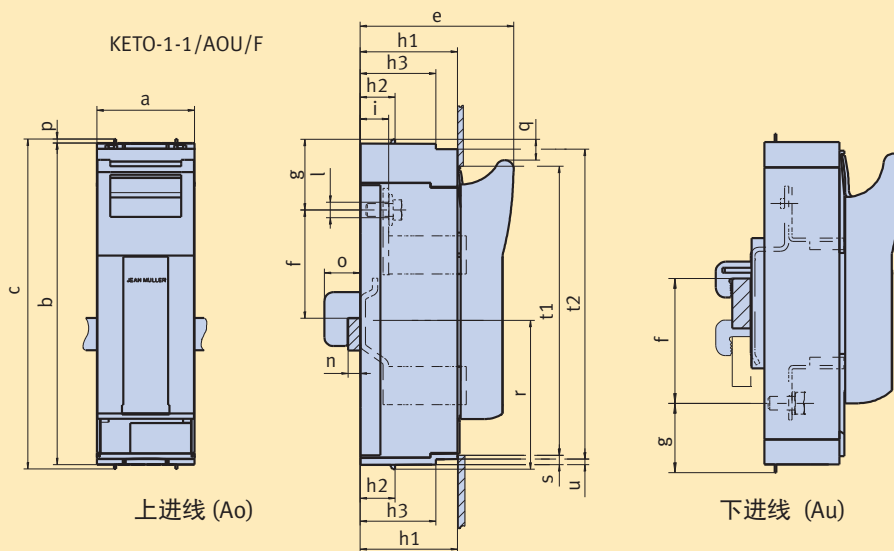


型号 Type	订货号 Article-No.	页码 Page	型号 Type	订货号 Article-No.	页码 Page
KETO-1-3/60/AOU/F	T10111600	T10	KETO-2-3/60/AOU/F	T20111600	T10
KETO-3-3/60/AOU/F	T30111600	T10	-	-	-



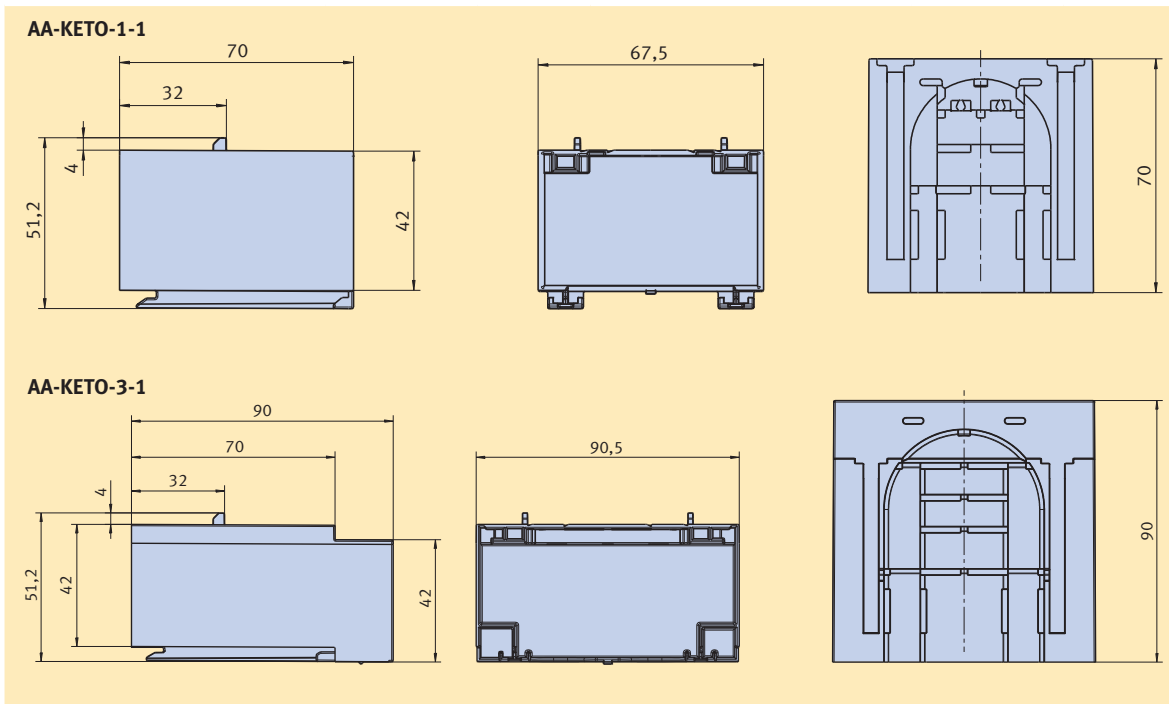
型号/Type	a	b	c	e	f-Au	a-Ao	h1	h2	h3	i	k	l	m	n	o	p	q	r	s	t1	t2	u
KETO-1-3/60/AOU/F	184	298	306	117	98	87	70	32	-	25,5	58	Ø10,5	60	4-10	25	4	19	102	5	272	-	-
KETO-2-3/60/AOU/F	210	298	306	135	109	96	90	32	70	26,5	66	Ø14	60	4-10	25	4	19	102	10	268	289	5
KETO-3-3/60/AOU/F	250	298	306	143	109	96	90	32	70	26,5	82	Ø14	60	4-10	25	4	19	102	10	268	289	5

型号 Type	订货号 Article-No.	页码 Page	型号 Type	订货号 Article-No.	页码 Page
KETO-1-1/AOU/F	T103115000	T-10	KETO-3-1/AOU/F	T303115000	T-10

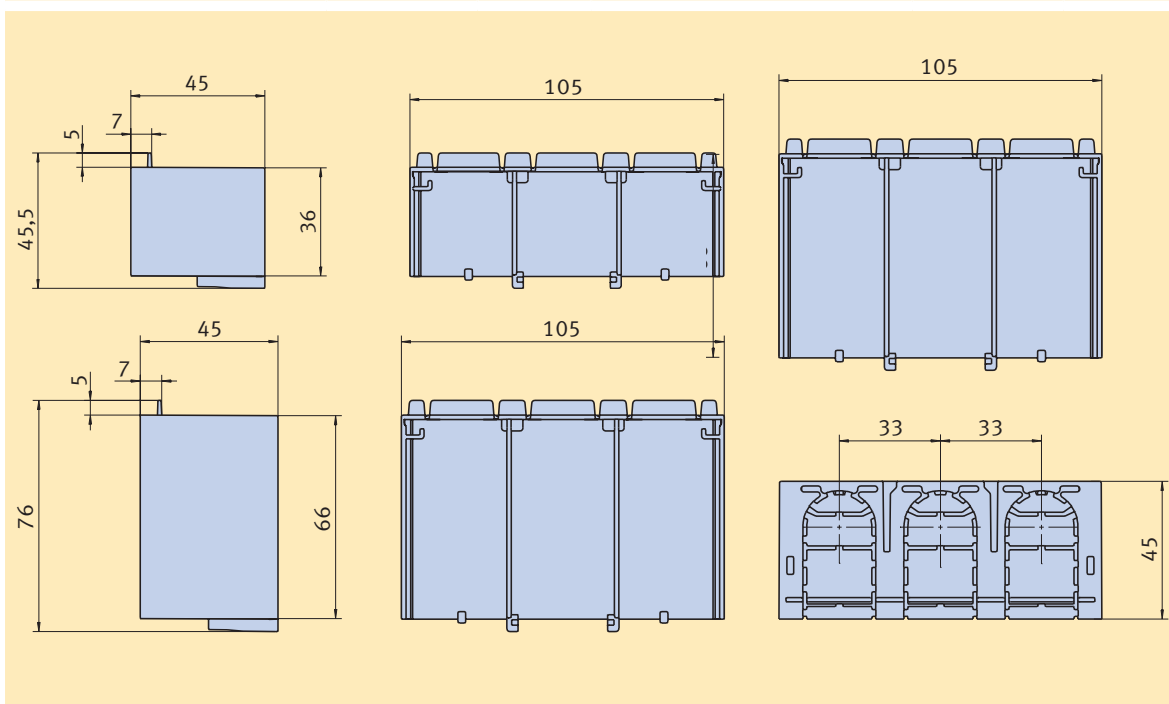


型号/Type	a	b	c	e	f-Ao	f-Au	g-Ao	g-Au	h1	h2	h3	i	l	n	o	p	q	r	s	t1	t2	u
KETO-1-1	69	298	306	117	93	93	76	44	70	32	-	25,5	Ø10,5	5-10	33	4	19	138	5	272	-	-
KETO-3-1	91	298	306	143	100	104	66	36	90	32	70	26,5	Ø14	5-10	33	4	19	138	10	268	289	5

型号 Type	订货号 Article-No.	页码 Page	型号 Type	订货号 Article-No.	页码 Page
AA-KETO-1-1	T8013010	T-12	AA-KETO-3-1	T8033010	T-12



型号 Type	订货号 Article-No.	页码 Page	型号 Type	订货号 Article-No.	页码 Page
AA-KETO-00-3/36	T8053010	T-12	AA-KETO-00-3/66	T8053130	T-12

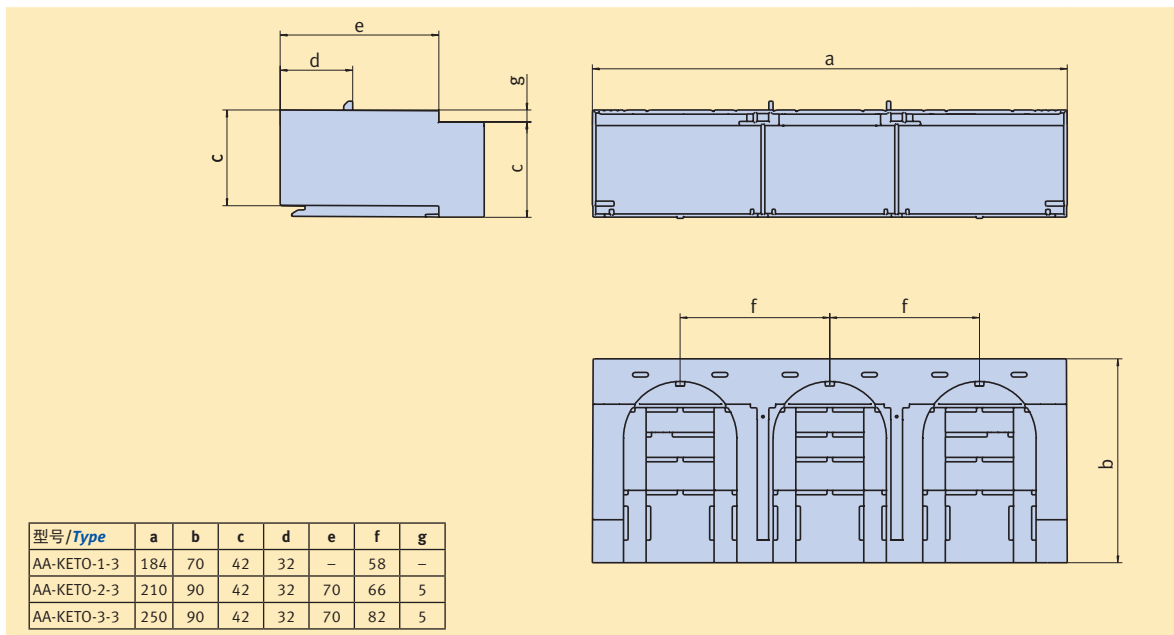


低压高分断熔断器式隔离开关 KETO

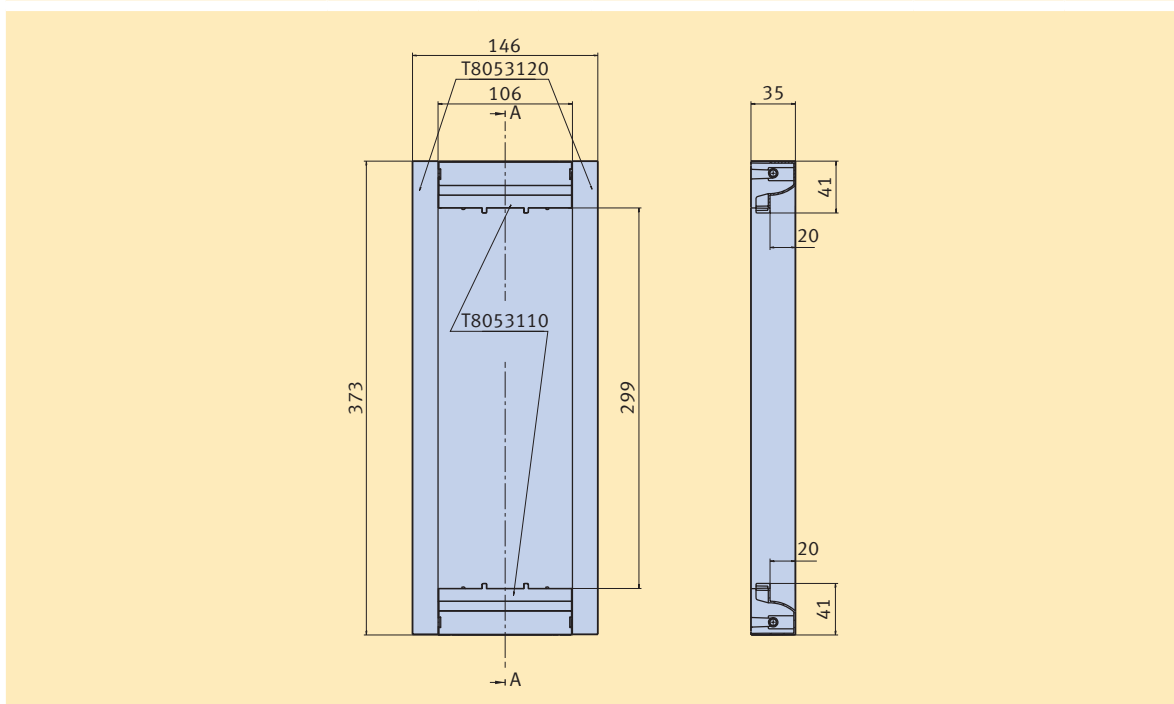
NH fuse-switch-disconnectors KETO

尺寸 / Dimensions

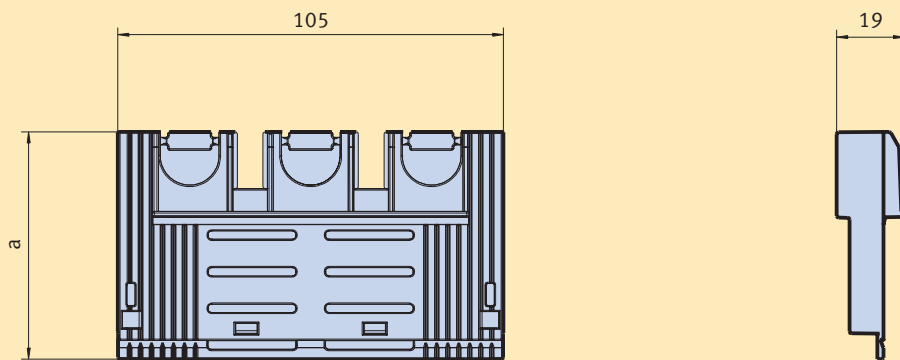
型号 Type	订货号 Article-No.	页码 Page
AA-KETO-1-3	T8013030	T-12
AA-KETO-2-3	T8023030	T-12
AA-KETO-3-3	T8033030	T-12



型号 Type	订货号 Article-No.	页码 Page	型号 Type	订货号 Article-No.	页码 Page
HAA-KETO-00-3/70-90/OU	T8053110	T-12	HAA-KETO-00-3/70-90/SRL	T8053120	T-12

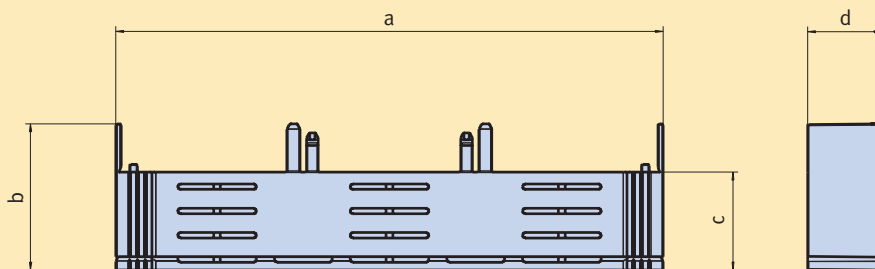


型号 Type	订货号 Article-No.	页码 Page	型号 Type	订货号 Article-No.	页码 Page
UGS-KETO-00-3/R95/39-34	T8053080	T-12	UGS-KETO-00-3/R95/32	T8053090	T-12



型号/Type	a
UGS-KETO-00-3/R95/39-34	62
UGS-KETO-00-3/R95/32	55

型号 Type	订货号 Article-No.	页码 Page	型号 Type	订货号 Article-No.	页码 Page
UGS-KETO-1-3/32	T8013050	T-12	UGS-KETO-2-3/39-34	T8023040	T-12
UGS-KETO-1-3/39-34	T8013040	T-12	UGS-KETO-3-3/32	T8033050	T-12
UGS-KETO-2-3/32	T8023050	T-12	UGS-KETO-3-3/39-34	T8033040	T-12



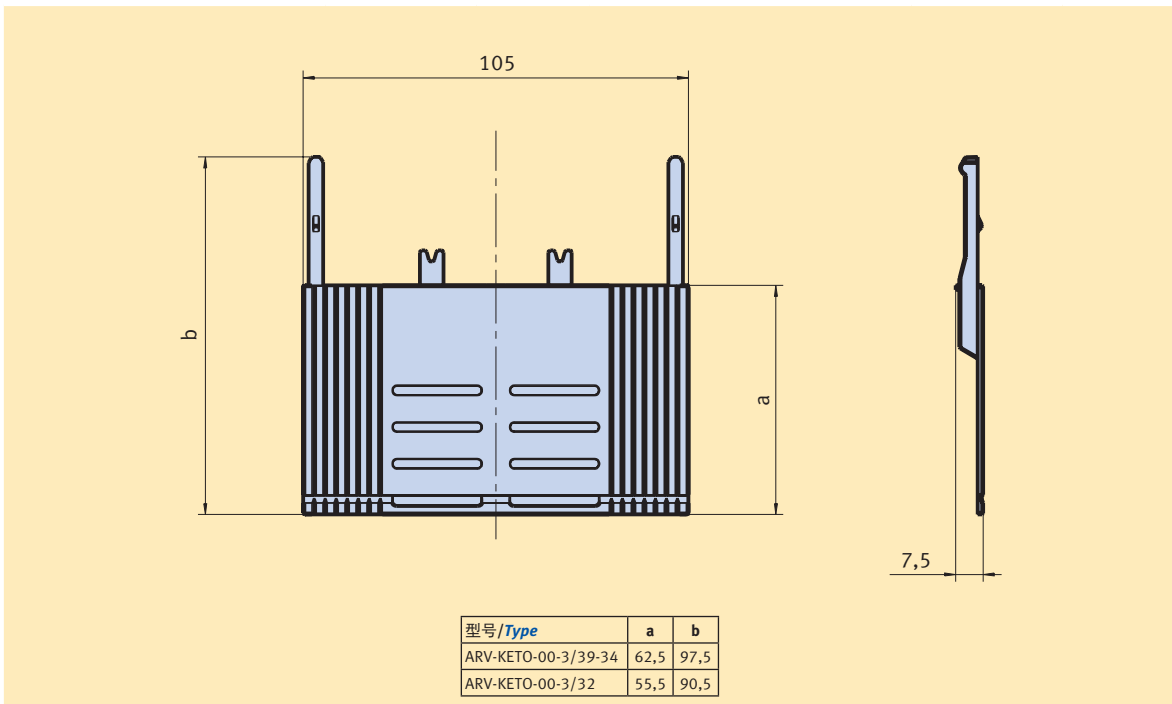
型号/Type	a	b	c	d
UGS-KETO-1-3/32	184	51,5	30,5	16
UGS-KETO-1-3/39-34	184	58,5	37,5	16
UGS-KETO-2-3/32	210	49	30,5	28,5
UGS-KETO-2-3/39-34	210	56	37,5	28,5
UGS-KETO-3-3/32	250	49	30,5	28,5
UGS-KETO-3-3/39-34	250	56	37,5	28,5

低压高分断熔断器式隔离开关 KETO

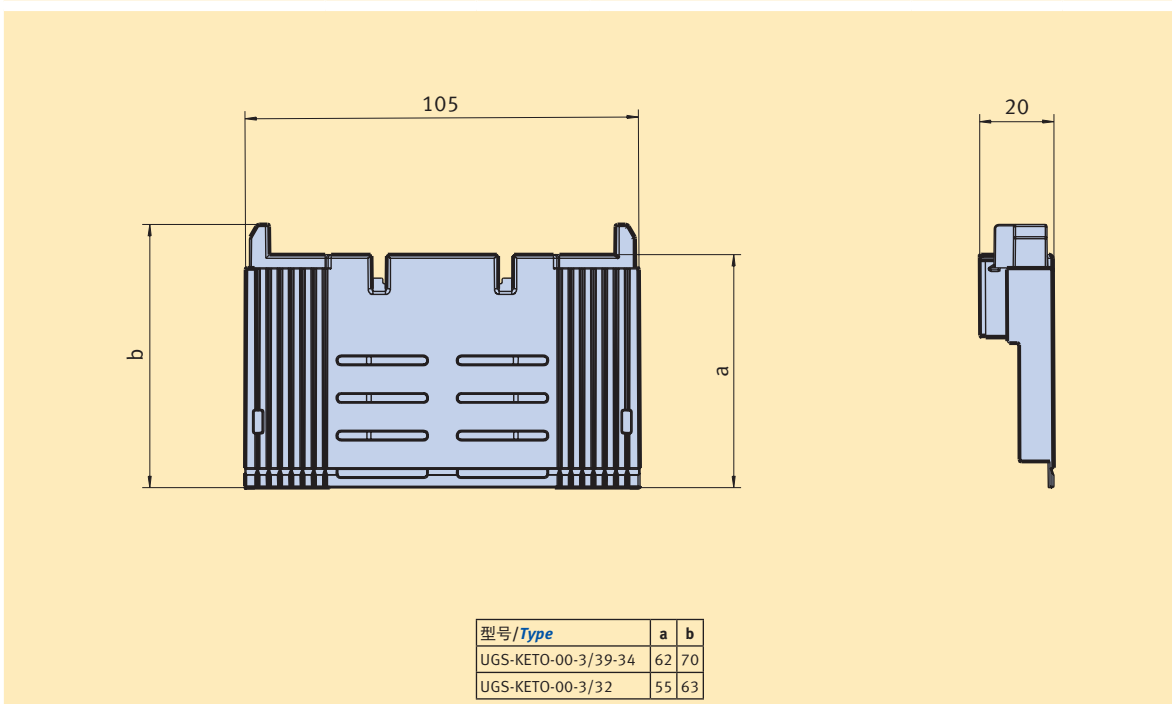
NH fuse-switch-disconnectors KETO

尺寸 / Dimensions

型号 Type	订货号 Article-No.	页码 Page	型号 Type	订货号 Article-No.	页码 Page
ARV-KETO-00-3/39-34	T8053060	T-12	ARV-KETO-00-3/32	T8053070	T-12



型号 Type	订货号 Article-No.	页码 Page	型号 Type	订货号 Article-No.	页码 Page
UGS-KETO-00-3/39-34	T8053040	T-12	UGS-KETO-00-3/32	T8053050	T-12



低压高分断熔断器式隔离开关 LTL

NH fuse-switch-disconnectors LTL

低压高分断熔断器式隔离开关，底板式安装，尺码4a
**NH fuse-switch-disconnector
for baseplate mounting, size 4a**



产品优势

高性能的短路分断能力

- 使用熔断体时，分断电流最高至80kA
- 使用隔离刀片时，短路耐受能力为35kA/1s



型号选择

- 可选单极至三极开关
- 可选单极操作或三极操作手柄



安全性

- 设有熔断器卡扣，以固定熔断器位置
- 开关外侧整体绝缘，无带电部分
- 根据 EN 60947-3进行型式试验

Convincing advantages

High short-circuit capability

- Fuse-protected conditional short-circuit current up to 80kA
- 35kA/1s short-circuit withstand when equipped with solid links

Various executions

- 1-pole up to 3-pole switches available
- Versions for 1-pole or 3-pole switching

Safety aspects

- Reliable locking of fuse carrier
- No accessible live parts
- Type tested according to EN 60947-3

尺寸 4a > 单极 > 底板式安装

Size 4a > 1-pole > **Baseplate mounting**



接线端子 Terminal version	线径 [mm ²] Connection [mm ²]	电流 I _n [A]	包装 PU	型号 Description	订货号 Article-No.
扁平端子 M16 Flat terminal M16	max. 400	1250	1	LTL4A-1X/9/1250	T4911004
扁平端子 2 x M12 Flat terminal 2 x M12	–	1600		LTL4A-1X/9/1600	T4911005

尺寸 4a > 2极到3极 > 底板式安装

Size 4a > 2- up 3-pole > **Baseplate mounting**

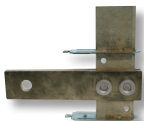
接线端子 Terminal version	线径 [mm ²] Connection [mm ²]	电流 I _n [A]	包装 PU	型号 Description	订货号 Article-No.
两级联动操作 2-pole switchable 扁平端子 M16 Flat terminal M16	max. 400	1250	1	LTL4A-2X2/9/1250	T4911019
三级联动操作 3-pole switchable 扁平端子 M16 Flat terminal M16	max. 400	1250		LTL4A-3X3/9/1250	T4911000
扁平端子 2 x M12 Flat terminal 2 x M12	–	1600		LTL4A-3X3/9/1600	T4911001

接线端子/**Terminal versions**

扁平端子 M16 Flat terminal M16	扁平端子 2 x M12 Flat terminal 2 x M12
	

附件/**Accessories**

	描述/Description	尺寸 Size	包装 PU	型号/Type	订货号 Order-No	页码 Page
	Direktanschlussklemme/Direct terminal clamp					
	3根95mm ² -150mm ² Al/Cu导线 3-conductors 95mm ² -150mm ² , Al/Cu	4a	1	K3G/3/AF40-50	K3203015	K-23
	4根95mm ² -150mm ² Al/Cu导线 4-conductors 95mm ² -150mm ² , Al/Cu			K3G/4/AF40-50	K3204016	K-23
2根120mm ² -300mm ² Al/Cu导线 2-conductors 120mm ² -300mm ² , Al/Cu	KV2HG-F/2/300/AF40-50			K2322064	K-23	

接地端子 /Earthing link, 1-pole						
	用于接地和短路 For earthing and short-circuiting	4a	1	EE-LTL4a	T8490601	T-43

附件/Accessories	技术参数/Technical data	尺寸/Dimensions
页码/Page: T-38ff.	页码/Page: T-39ff.	页码/Page: T-41ff.

低压高分断熔断器式隔离开关 LTL

NH fuse-switch-disconnectors LTL

技术参数/Technical data

型号/Type		LTL4a/1250		LTL4a/1600	
参照标准/According to standard		EN60947-3			
熔断体参照标准 DIN VDE 0636-2 For NH fuse-links acc. to DIN VDE 0636-2	尺寸 Size	4a		4a	
额定工作电压 Rated operational voltage	U _e V	AC690		AC690	
额定工作电流 ¹⁾ Rated operational current ¹⁾	I _e A	1250		1600	
使用熔断体时约定发热电流 ¹⁾ Conv. free air thermal current with fuse-links ¹⁾	I _{th} A	1250		1600	
使用隔离刀片时约定发热电流 ¹⁾ Conv. free air thermal current with solid-links ¹⁾	I _{th} A	1250		1600	
额定频率 Rated frequency	– Hz	40-60		40-60	
额定绝缘电压 Rated insulation voltage	U _i V	AC800		AC800	
约定发热电流损耗(不安装熔断体) Total power loss at I _{th} (without fuse-links)	P _v W	32		52	
80%约定发热电流损耗(不安装熔断体) ²⁾ Power loss at 80% I _{th} (without fuse-links) ²⁾	P _v W	20,5		33,3	
额定冲击耐受电压 Rated impulse withstand voltage	U _{imp} kV	8		8	
使用类别 Utilization category	–	AC-21B (690V/1000A) AC-22B (500V/1250A)		AC-21B (690V/1000A) AC-22B (500V/1600A)	
额定短路能力 ³⁾ Rated conditional short-circuit current ³⁾	– kA	80 (500V) 50 (690V)		80 (500V) 50 (690V)	
额定短时耐受电流 Rated short-time withstand current	I _{cw} kA	35		35	
单位熔断体最大允许损耗功率 Max. permis. power loss per fuse-link	P _a W	110		164	

1) 如果将多个开关安装于在同一开关柜中时, 请根据DIN EN 61439考虑额定分散系数。
In case of mounting of several units in low voltage switchgear-combinations, please consider rated diversity factors acc. to DIN EN 61439.

2) 更换设备的参考值请根据DIN EN 61439第10.10.4.2条款。
Reference value for replacement of devices acc. to DIN EN 61439-1 clause 10.10.4.2.

3) 请使用特性为gG的低压熔断体进行型式试验。/Type tested with NH-fuse-links characteristic gG.

型号/Type				LTL4a/1250		LTL4a/1600		
接线端子 Cable terminal	扁平端子 Flat terminal	螺栓直径 Bolt diameter	-	-	M16	2 x M12		
		电缆夹/Cable lug (DIN 46 235)	-	mm ²	400	-		
		扁平铜排 Flat bar	-	mm	80 x 30	80 x 30		
		安装扭矩 Tightening torque	M _a	Nm	50-60	35-40		
	接线夹 Clamp	电缆线径 Clamping cross-section	-	mm ²	KV2HG/ 2/300/ AF40-50	2 x(95-300)	-	-
		安装扭矩 Tightening torque	-	Nm				40
		电缆线径 Clamping cross-section	-	mm ²	K3G/3/ AF40-50	3 x(95-150)	-	-
		安装扭矩 Tightening torque	-	Nm				50
		电缆线径 Clamping cross-section	-	mm ²	K3G/4/ AF40-50	4 x(95-150)	-	-
		安装扭矩 Tightening torque	-	Nm				50
防护等级 Degree of protection	安装完毕后, 开关面板侧 Front side, device fitted	工作状态 Operating condition	-	-	IP20	IP20		
工作条件 Operating conditions	环境温度 ⁴⁾ /Ambient temperature ⁴⁾	T _{amb}	°C	-25 bis/to +55				
	额定工作类型/Rated operating mode	-	-	不间断工作制/Uninterrupted duty				
	操作方式/Actuation	-	-	有关人力操作 Dependent manual operation				
	安装方式/Mounting position	-	-	垂直, 水平 Vertical, horizontal				
	海拔高度/Altitude	-	m	可达2000/Up to 2000				
	污染等级/Pollution degree	-	-	3				
过压等级/Overtoltage category	-	-	III					

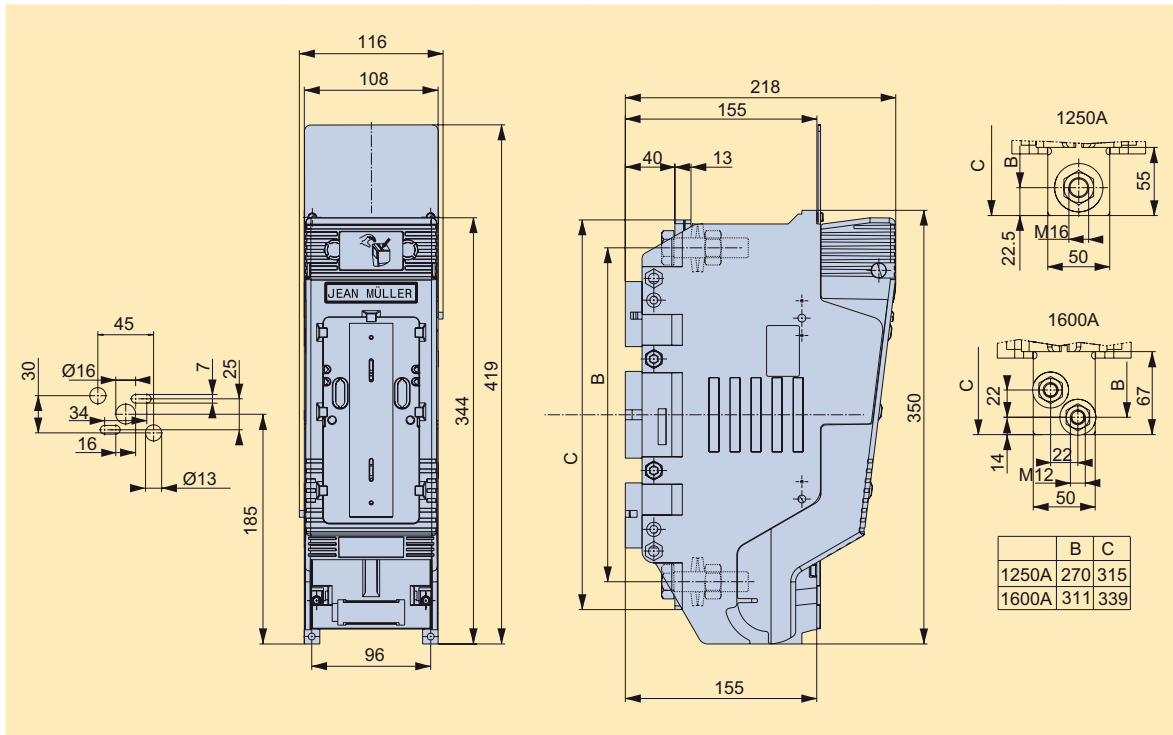
4) 35°C 为正常使用温度, 55°C 时需降低额定工作电流。/35°C Normal temperature, at 55°C with reduced operating current.

低压高分断熔断器式隔离开关 LTL

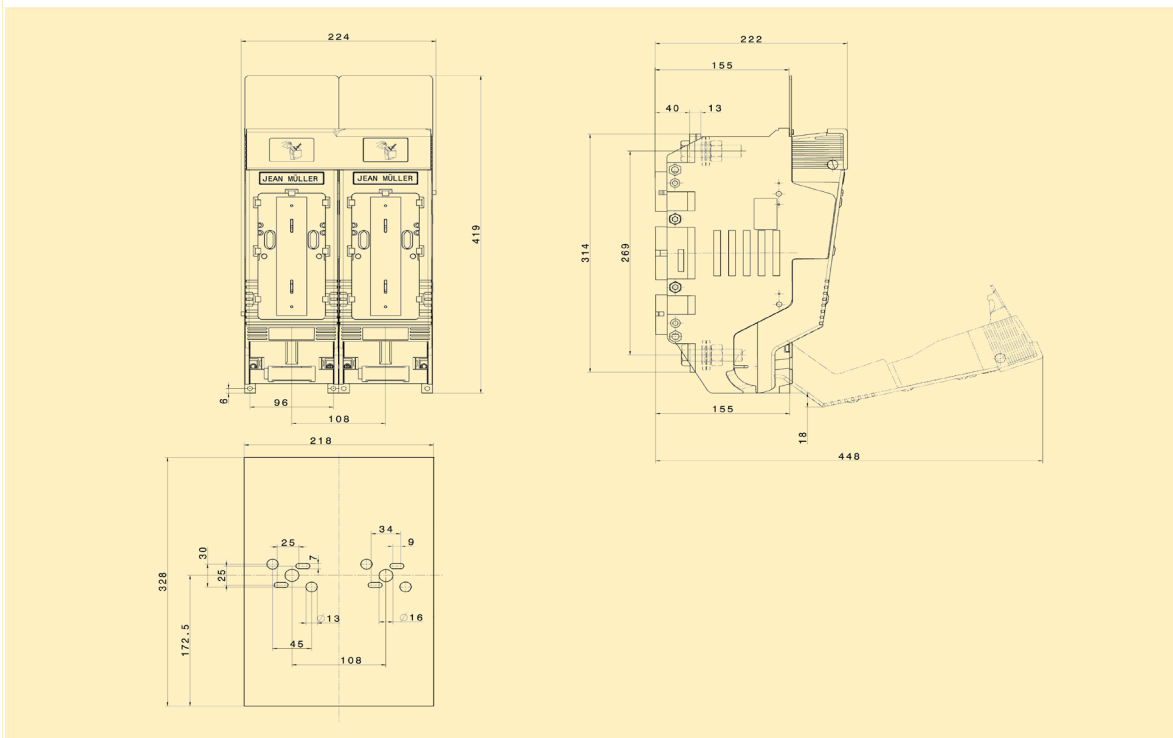
NH fuse-switch-disconnectors LTL

尺寸/Dimensions

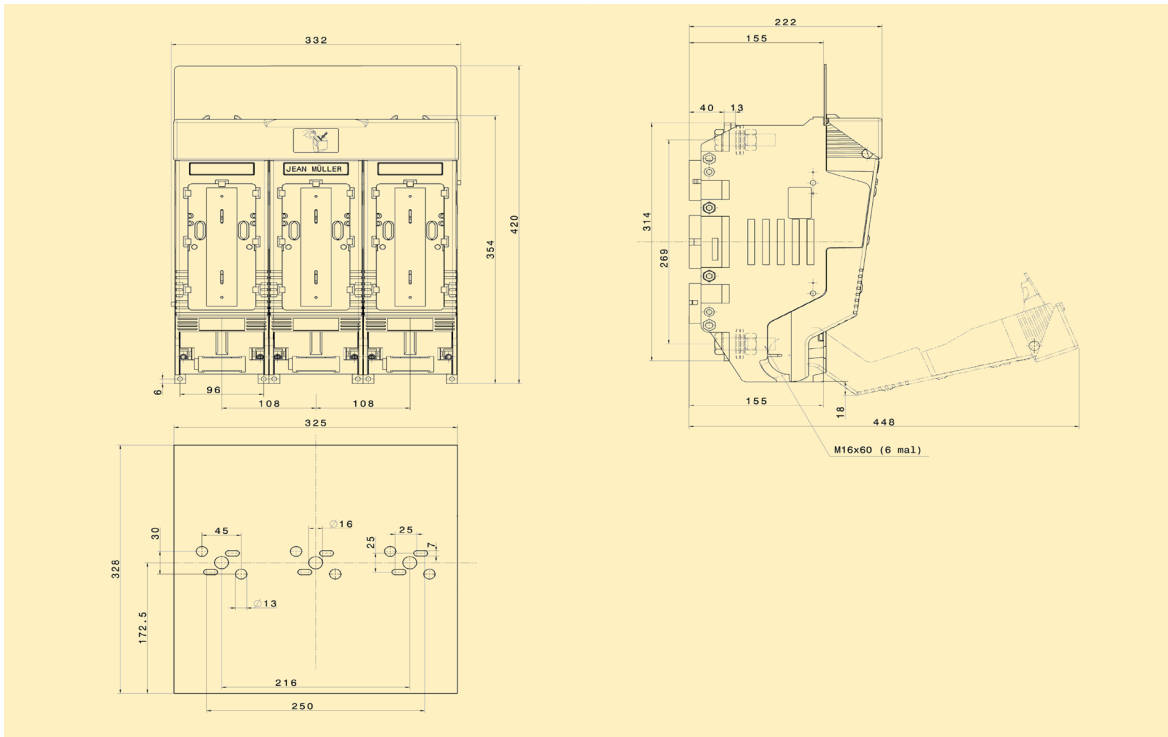
型号/Type	订货号/Article-No.	页码/Page	型号/Type	订货号/Article-No.	页码/Page
LTL4A-1X/9/1250	T4911004	T-38	LTL4A-1X/9/1600	T4911005	T-38



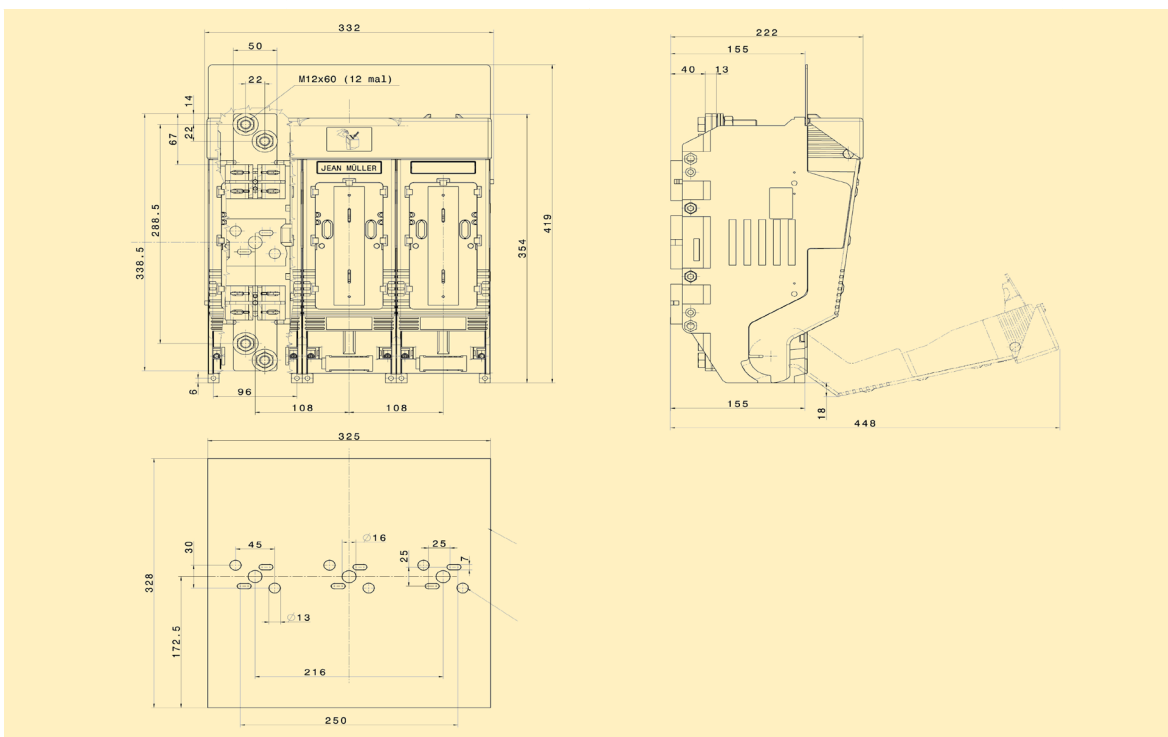
型号/Type	订货号/Article-No.	页码/Page	型号/Type	订货号/Article-No.	页码/Page
LTL4A-2X2/9/1250	T4911019	T-38	-	-	-



型号/Type	订货号/Article-No.	页码/Page	型号/Type	订货号/Article-No.	页码/Page
LTL4A-3X3/9/1250	T4911000	T-38	-	-	-



型号/Type	订货号/Article-No.	页码/Page	型号/Type	订货号/Article-No.	页码/Page
LTL4A-3X3/9/1600	T4911001	T-38	-	-	-



低压高分断熔断器式隔离开关 LTL

NH fuse-switch-disconnectors LTL

尺寸/*Dimensions*

型号/ <i>Type</i>	订货号/ <i>Article-No.</i>	页码/ <i>Page</i>
EE-LTL4a	T8490601	T-38

